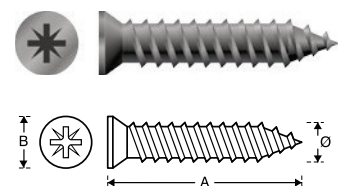


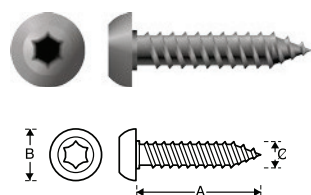
Modello / Model  
**Testa cilindrica  
taglio croce**  
Cross recessed  
pan head  
chipboard screw

Dimensioni /  
Dimensions available  
Ø 3 × 20  
Ø 4 × 25  
Ø 4 × 35



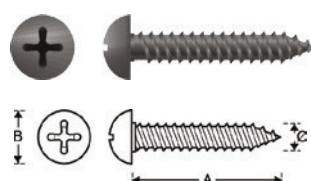
Modello / Model  
**Testa piana svasata  
taglio croce**  
Cross recessed  
countersunk head  
chipboard screw

Dimensioni /  
Dimensions available  
Ø 3,5 × 30  
Ø 4,5 × 35



Modello / Model  
**Testa mezza tonda  
taglio Torx**  
Torx recessed  
half round head  
chipboard screw

Dimensioni /  
Dimensions available  
Ø 5,5 × 25  
Ø 5,5 × 30  
Ø 5,5 × 35  
Ø 5,5 × 45

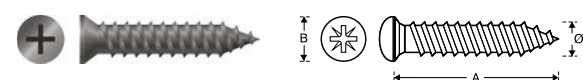


Modello / Model  
**Autofilettante testa  
cilindrica DIN 7981**  
Self tapping cylinder  
head DIN 7981

Dimensioni /  
Dimensions available  
Ø 3,9 × 25  
Ø 3,9 × 32  
Ø 5,5 × 25  
Ø 5,5 × 32  
Ø 5,5 × 38



IDONEA PER PROFILI IN ALLUMINIO  
SUITABLE FOR ALLUMINIUM PROFILES

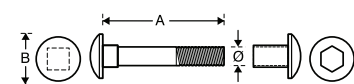


Modello / Model  
**Autofilettante testa  
piana svasata DIN 7982**  
Self tapping cylinder  
sunk rear DIN 7982

Dimensioni /  
Dimensions available  
Ø 3,9 × 13  
Ø 3,9 × 32

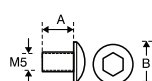


IDONEA PER PROFILI IN ALLUMINIO PER APPLICAZIONE CON  
BANDELLE  
AD INCASSO

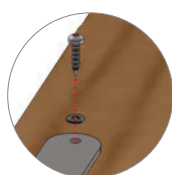
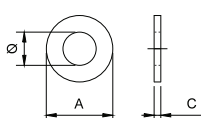


Modello / Model  
**Testa tonda  
quadro sotto testa  
DIN 603  
con borchia**  
Cup head  
square neck bolts  
with large head DIN 603  
and stud

Dimensioni /  
Dimensions available  
M5 × 30  
M5 × 35  
M5 × 40  
M5 × 45  
M5 × 50  
M5 × 55



Modello / Model  
**Borchia**  
Stud



Modello / Model  
**Rondella per fissaggio viti**  
Rubber washer for fitting