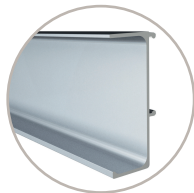
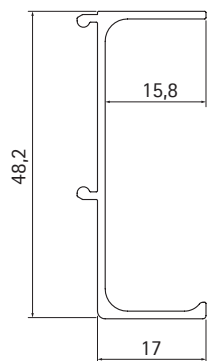


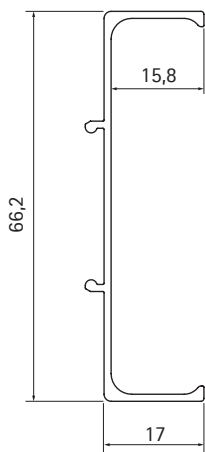
Serie G38 >



| Code | mm | m | kg | m |
|-----------|-------|----|----|----|
| 80/G38.AL | 4.200 | 42 | 18 | 42 |

Profilo gola orizzontale / verticale singola
Horizontal gola system / single vertical

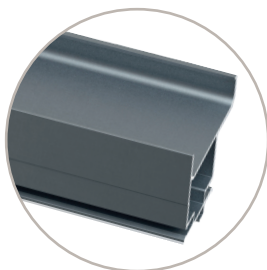
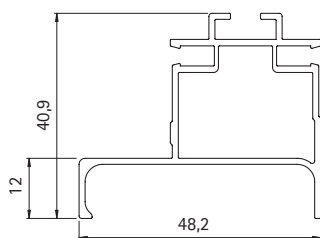
Serie G39 >



| Code | mm | m | kg | m |
|-----------|-------|----|----|----|
| 80/G39.AL | 4.200 | 42 | 18 | 42 |

Profilo gola orizzontale per cassetti / verticale doppia
Horizontal gola system for drawers / double vertical

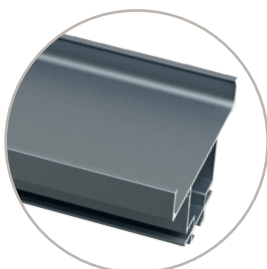
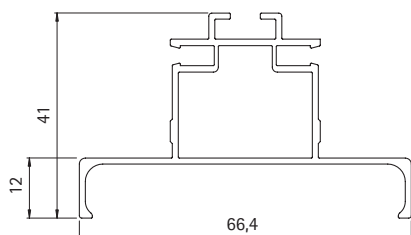
Serie G43 >



| Code | mm | m | kg | m |
|-----------|-------|------|----|------|
| 80/G43.AL | 4.700 | 37,6 | 23 | 37,6 |

Gola prof. 12 sottotop/terminale verticale per utilizzo con basette lineari
12 mm deep gola for top/terminal vertical for linear base use

Serie G44 >



| Code | mm | m | kg | m |
|-----------|-------|------|----|------|
| 80/G44.AL | 4.700 | 37,6 | 26 | 37,6 |

Gola prof. 12 cassetto/centrale verticale per utilizzo con basette lineari
12 mm deep gola for drawer/central vertical for linear base use