

Scorribase STANDARD

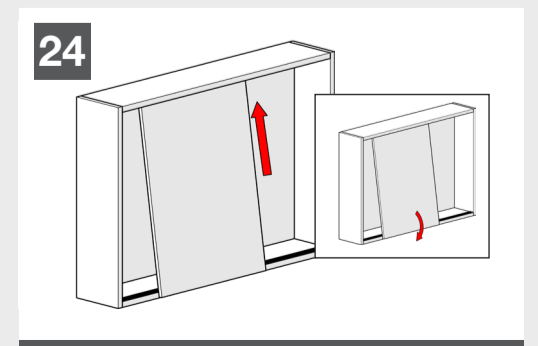
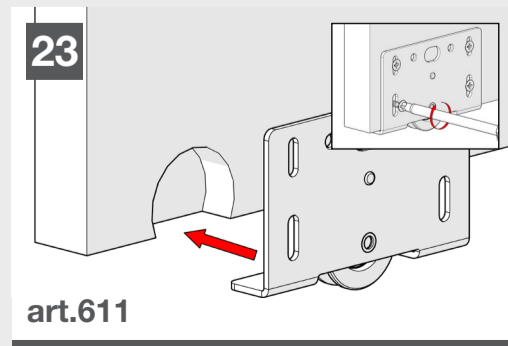
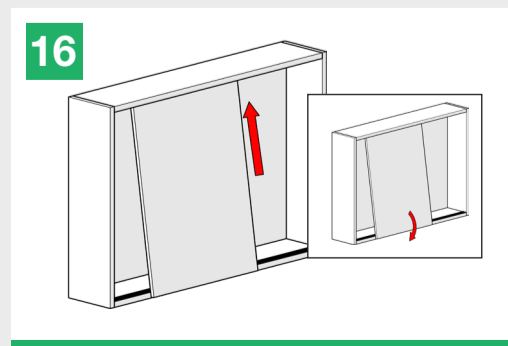
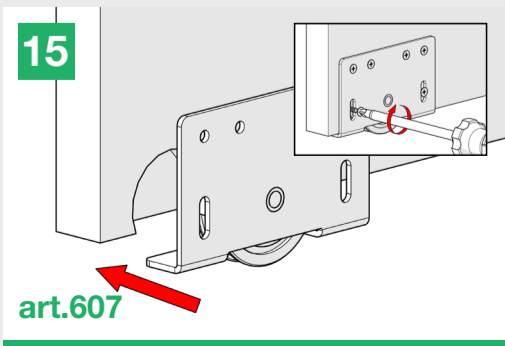
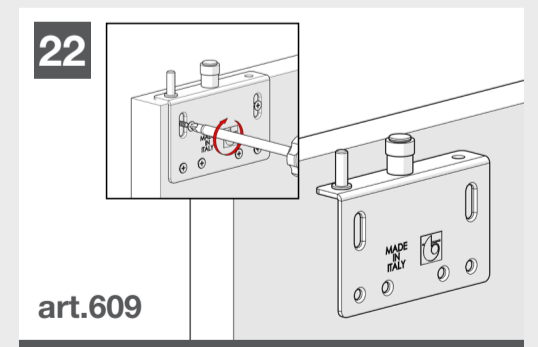
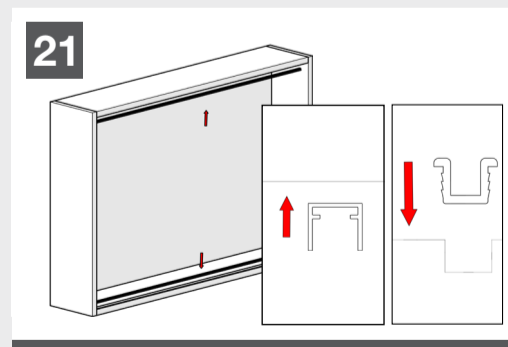
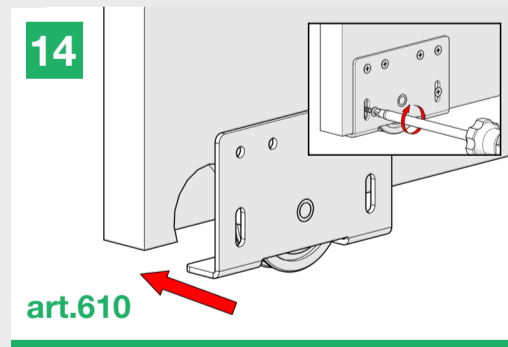
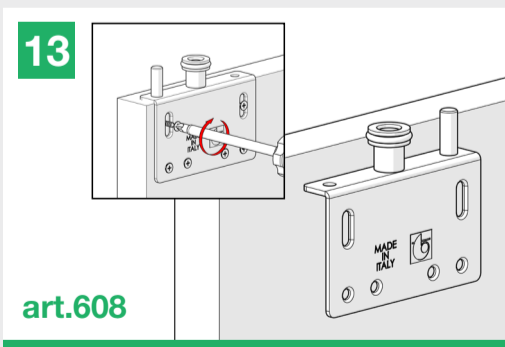
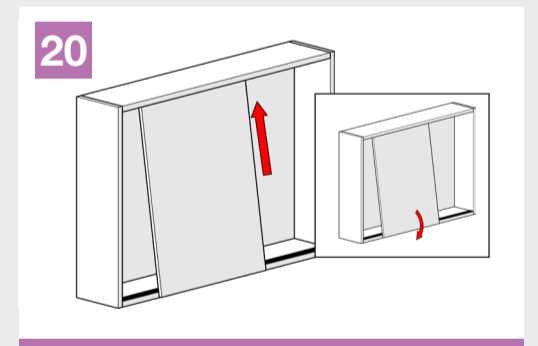
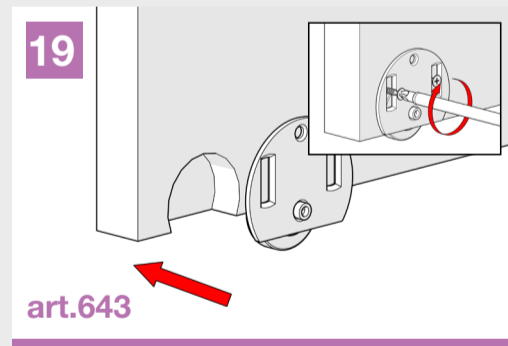
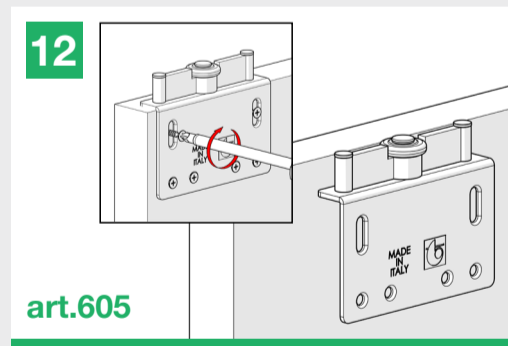
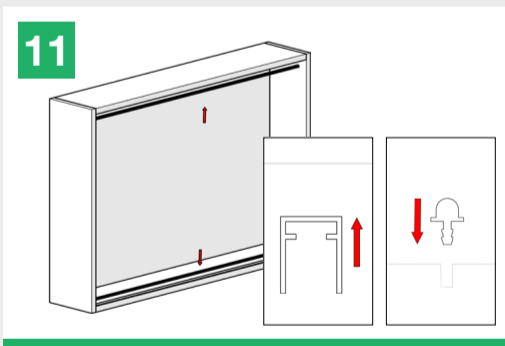
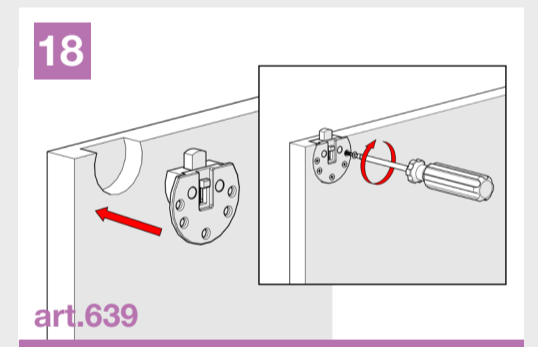
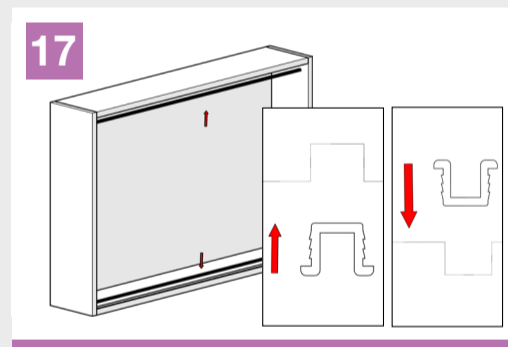
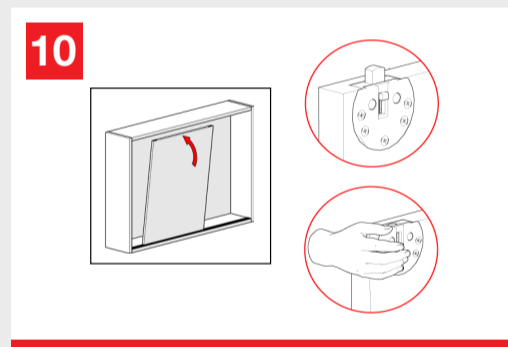
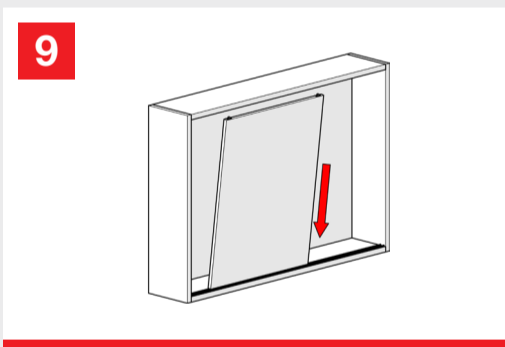
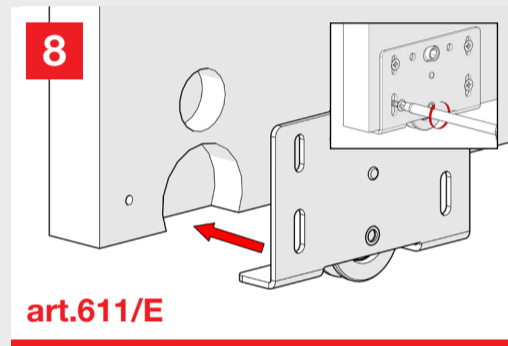
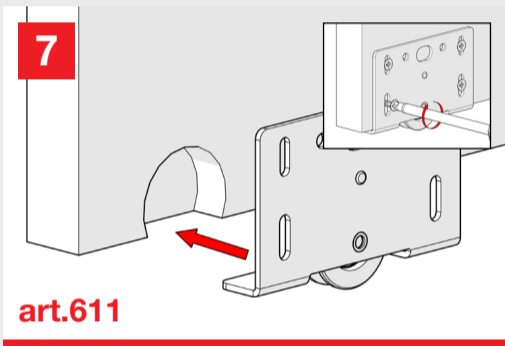
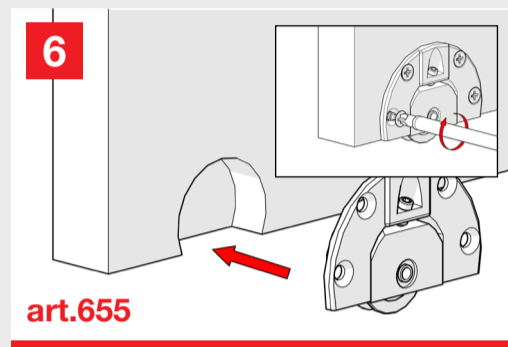
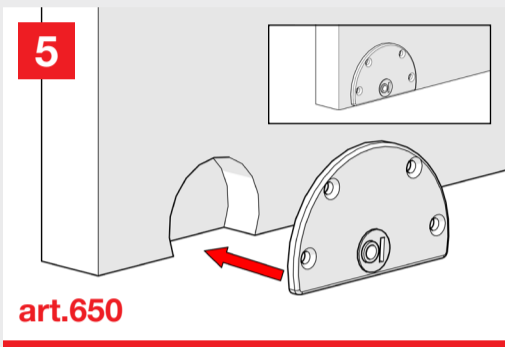
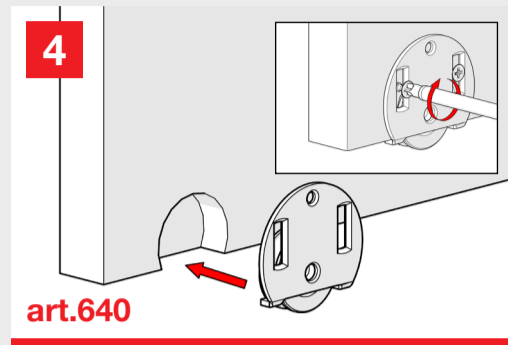
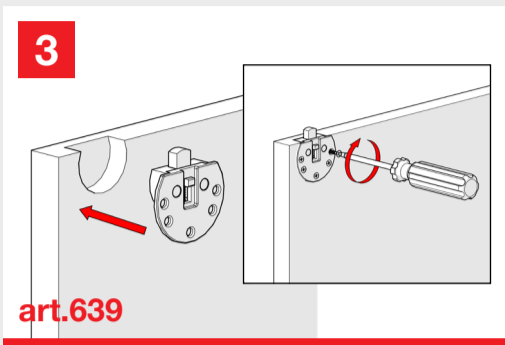
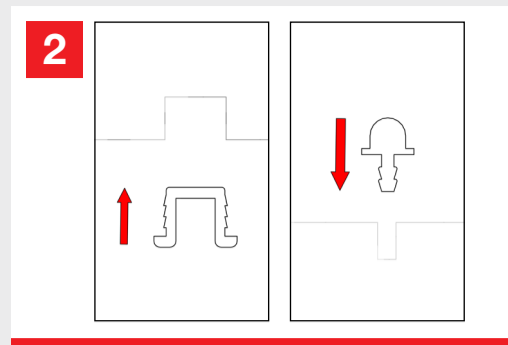
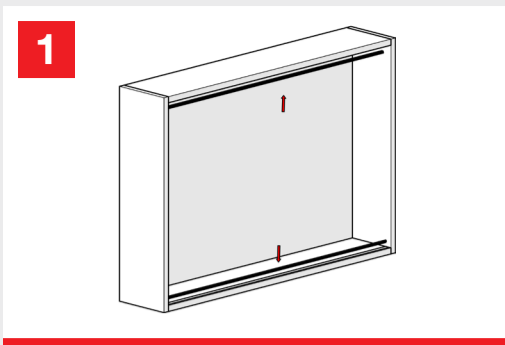
MOD. SCORRIBASE STANDARD
7002.07032 REV. 00

Scorribase Standard is the most traditional adjustable sliding system designed for cabinets with internal overlapped doors, weighing from 20 up to 80 kg.

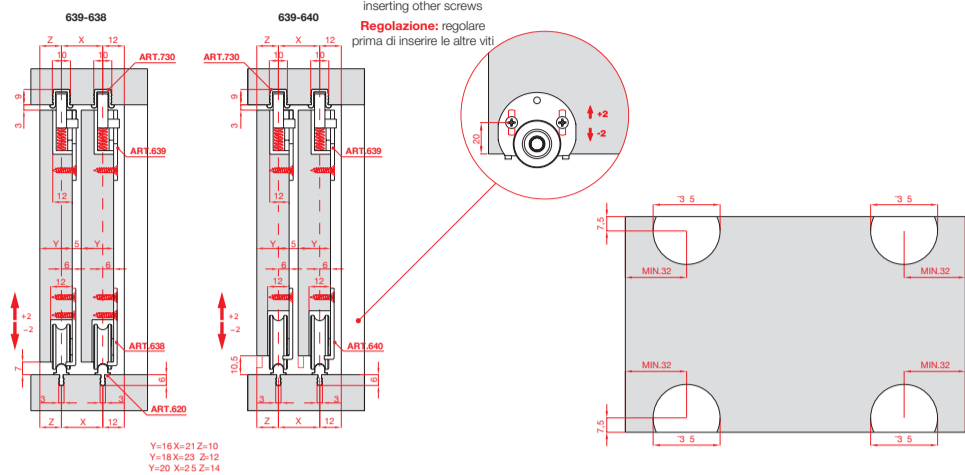
Scorribase Standard è il più tradizionale dei sistemi scorrevoli regolabili per mobili con ante sovrapposte, con portate da 20 fino a 80 kg.



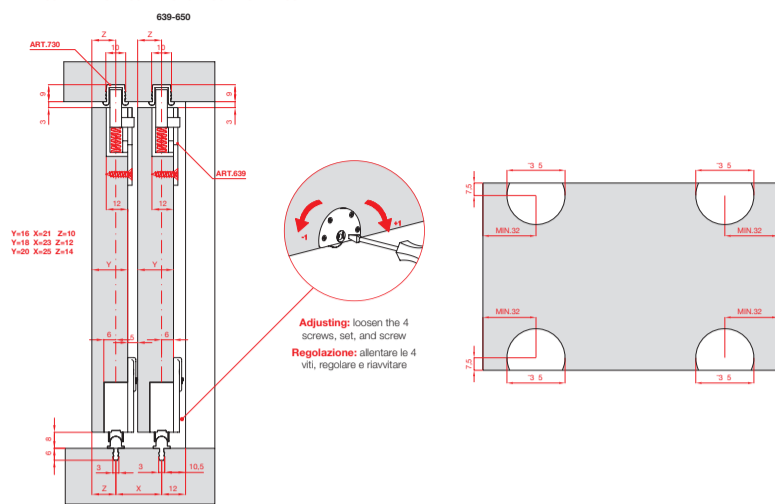
Growth is based on respect, protection is a duty. / La crescita si basa sul rispetto, proteggere è un dovere. 



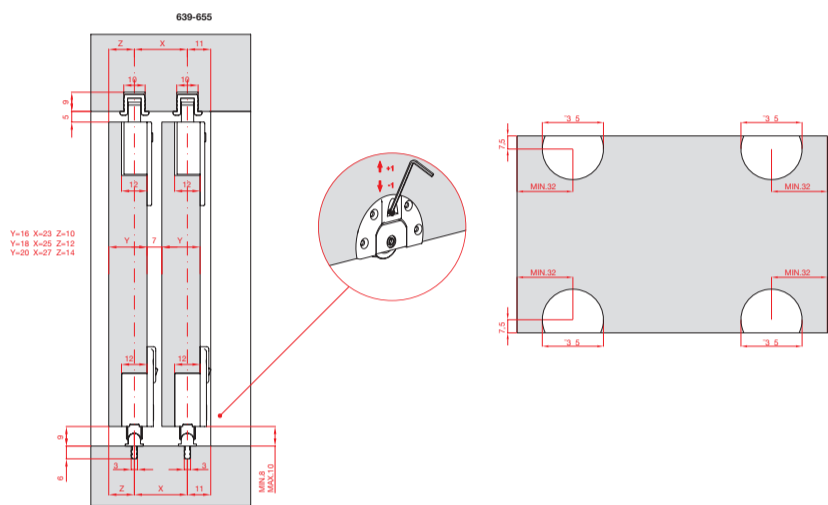
MEASUREMENTS DESCRIPTION / DESCRIZIONE MISURE



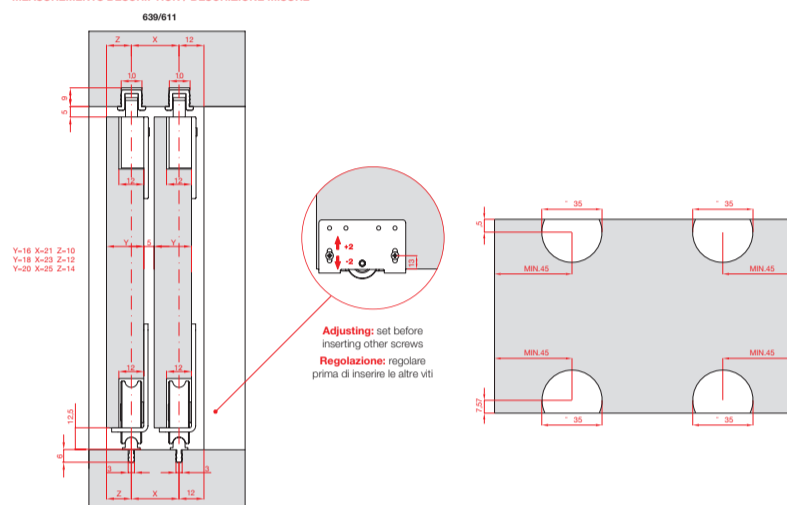
MEASUREMENTS DESCRIPTION / DESCRIZIONE MISURE



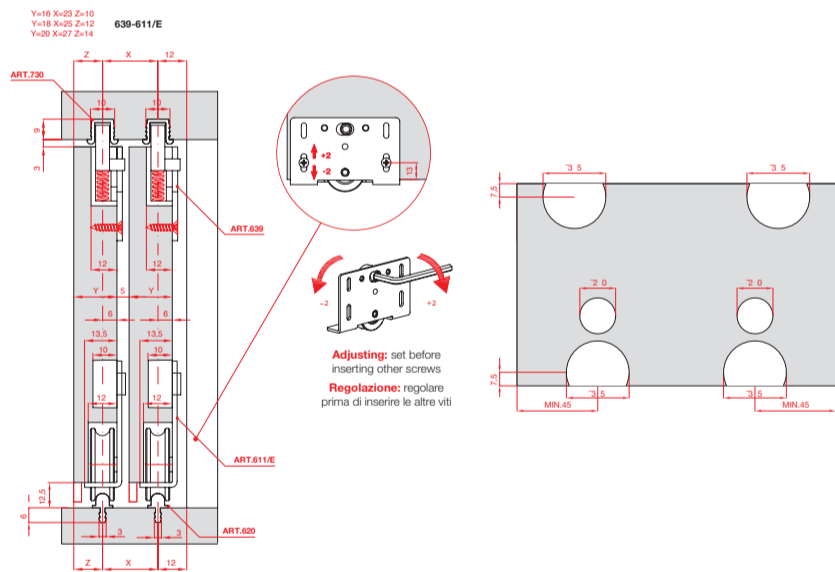
MEASUREMENTS DESCRIPTION / DESCRIZIONE MISURE



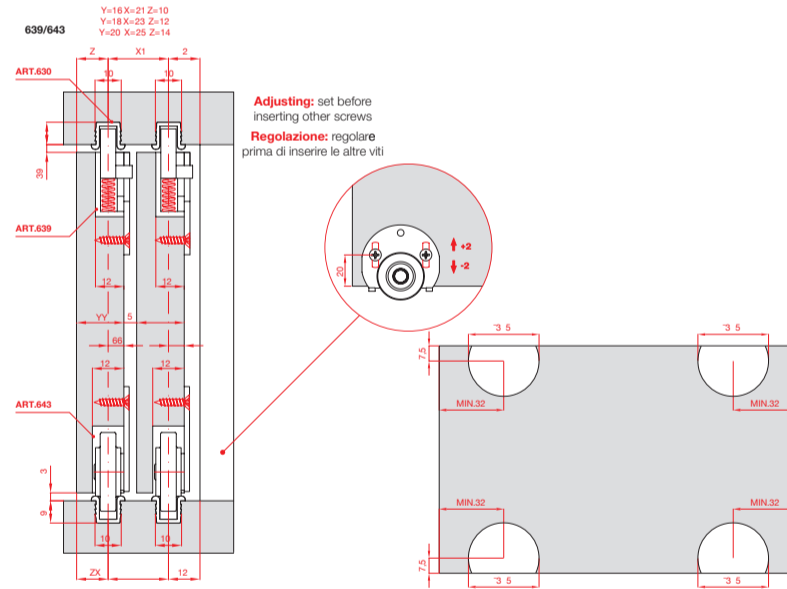
MEASUREMENTS DESCRIPTION / DESCRIZIONE MISURE



MEASUREMENTS DESCRIPTION / DESCRIZIONE MISURE

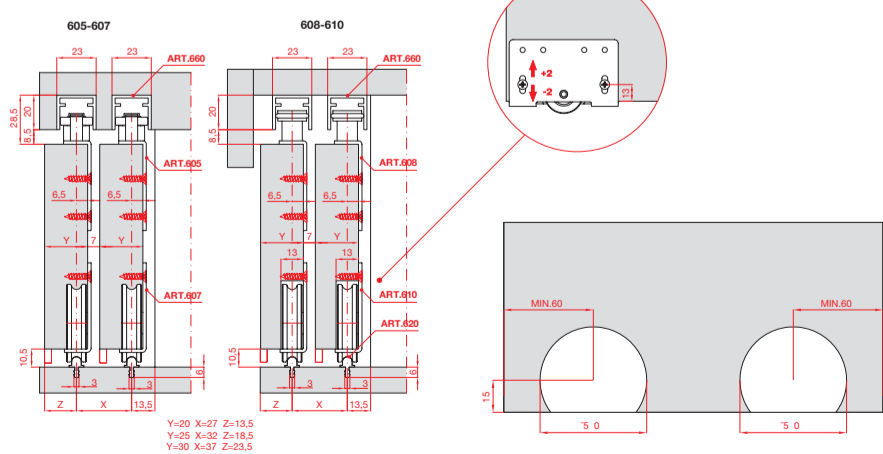


MEASUREMENTS DESCRIPTION / DESCRIZIONE MISURE



Adjusting: set before inserting other screws
 Regolazione: regolare prima di inserire le altre viti

MEASUREMENTS DESCRIPTION / DESCRIZIONE MISURE



MEASUREMENTS DESCRIPTION / DESCRIZIONE MISURE

