

# Scorribase Standard

Overlapped sliding panels with traditional clamp closing.

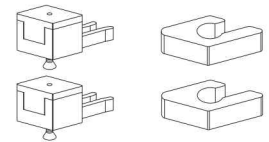
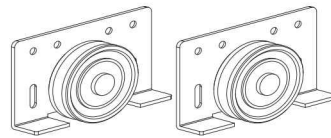
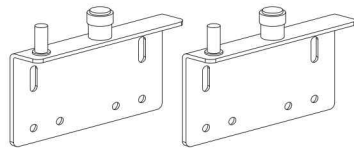
Ante scorrevoli sovrapposte con fermi tradizionali.



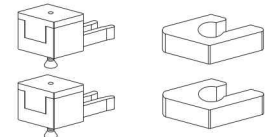
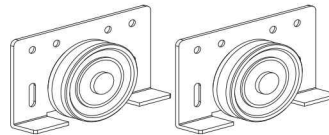
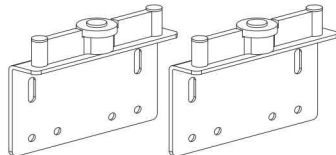
# Scorribase Standard

Systems for overlapping sliding doors  
Sistemi per ante scorrevoli sovrapposte

Kit for N.1 door  
Kit per N.1 anta

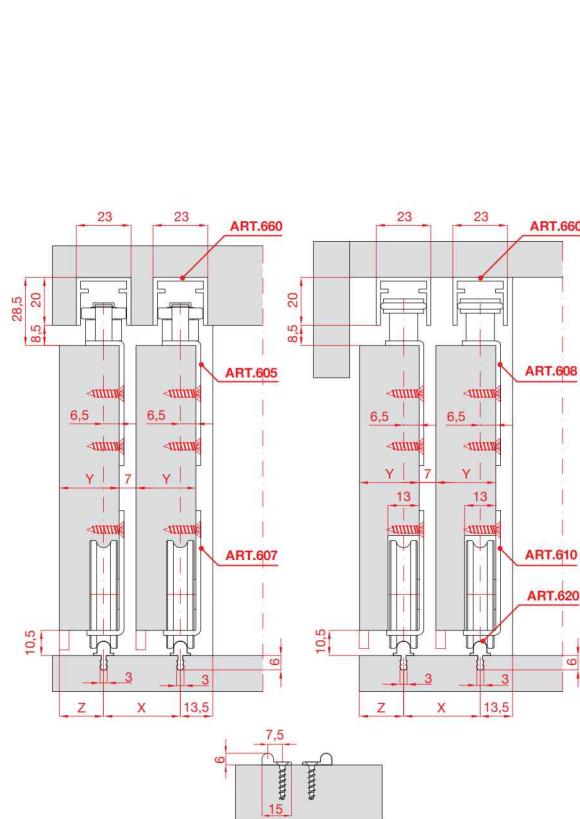


OLD CODE	NEW CODE		
608-610	K.1364.5.0	<b>60 kg</b>	10x



OLD CODE	NEW CODE		
605-607	K.1366.5.0	<b>80 kg</b>	10x

## MEASUREMENTS DESCRIPTION / DESCRIZIONE MISURE



Y=20 X=27 Z=13,5  
Y=25 X=32 Z=18,5  
Y=30 X=37 Z=23,5

