



# Hide

---

Slides with hidden bracket  
Scorrevoli con staffa a scomparsa



# Hide

**Hide** is a sliding system with **lateral manual coupling** bracket for wooden doors.

Hide bracket **can be fully recessed into the door**, in order to reduce the gap between door and track.

**Hide** is available with standard stoppers and with hydraulic stoppers suitable for naval sector and for doors of all sizes.

Maximum load capacity **up to 240 kg**.

**Hide** è il sistema di scorrimento con **staffa ad innesto manuale laterale**, per porte in legno.

La **staffa** di attacco è **interamente incassabile**, per ridurre lo spazio tra porta e binario.

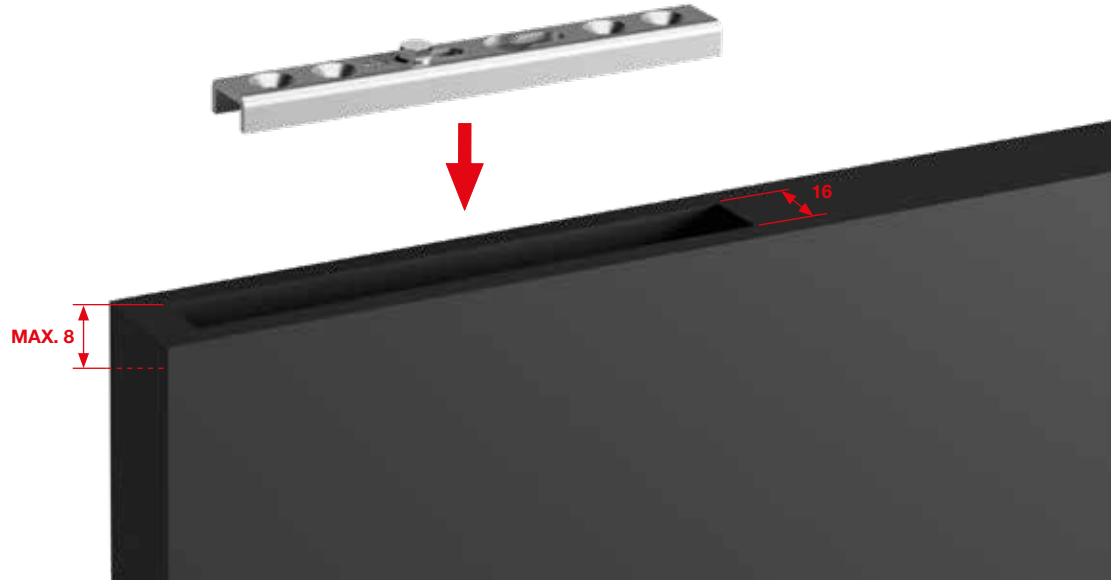
Hide è disponibile con fermi standard e fermi idraulici adatti per il settore navale per porte di tutte le larghezze.

Kit con portata **fino a 240 kg**.

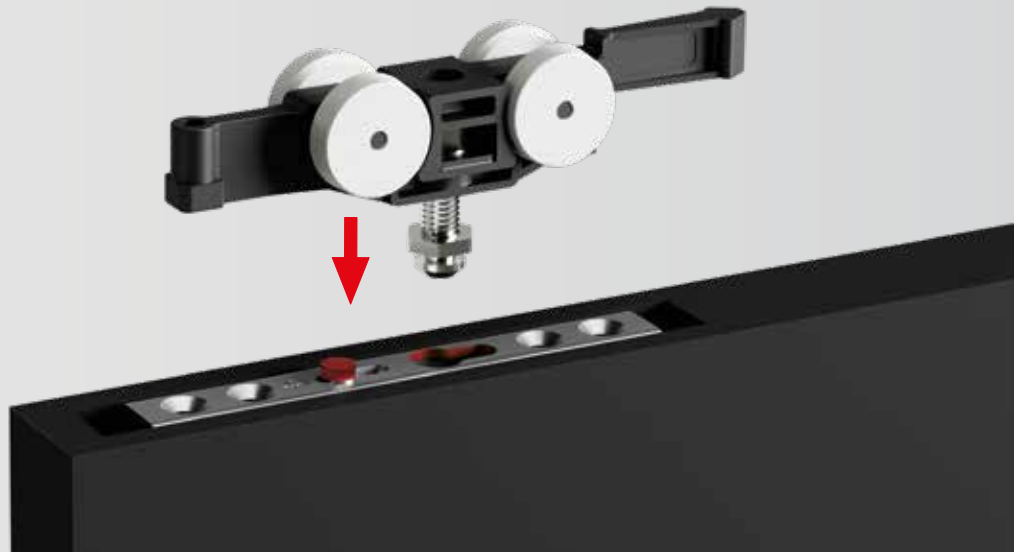


# Easy mounting Facile da montare

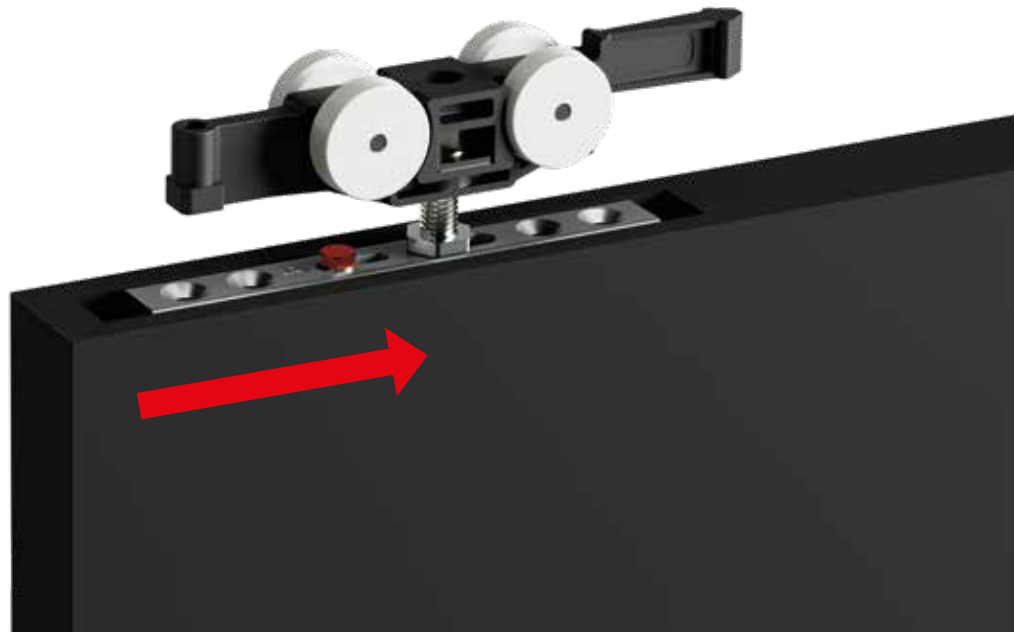
**1** Milled  
Fresata



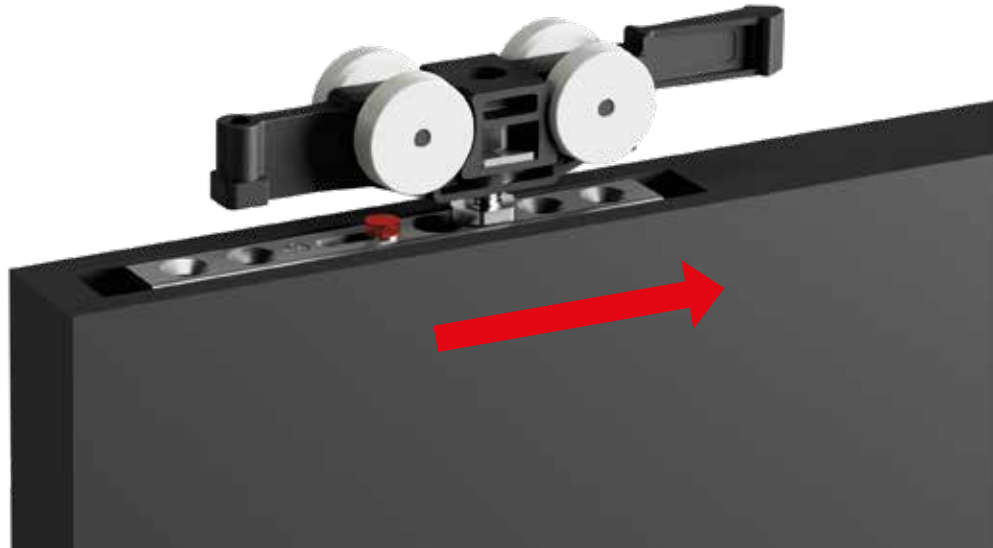
**2** Insert trolley  
Inserire il  
carrello



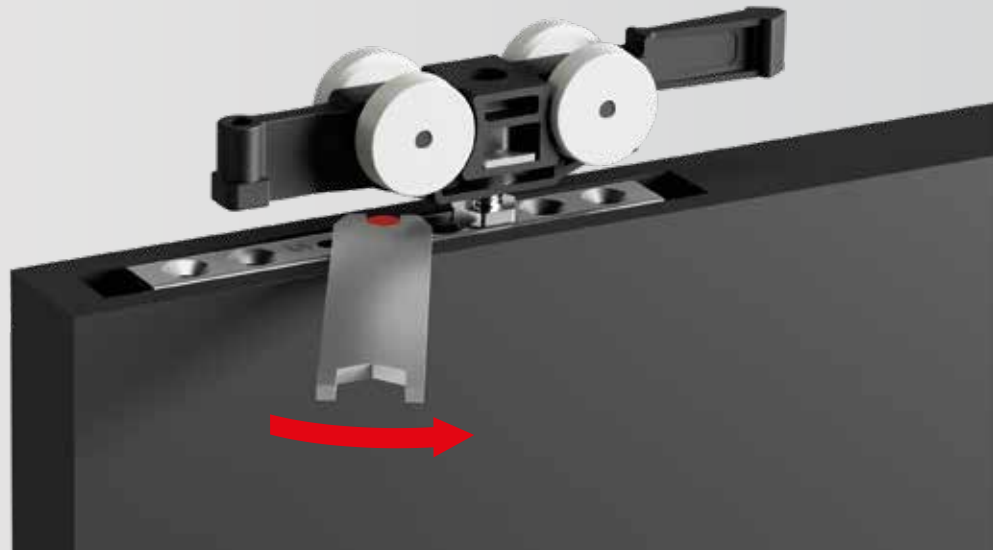
**3** Lock it  
Bloccare



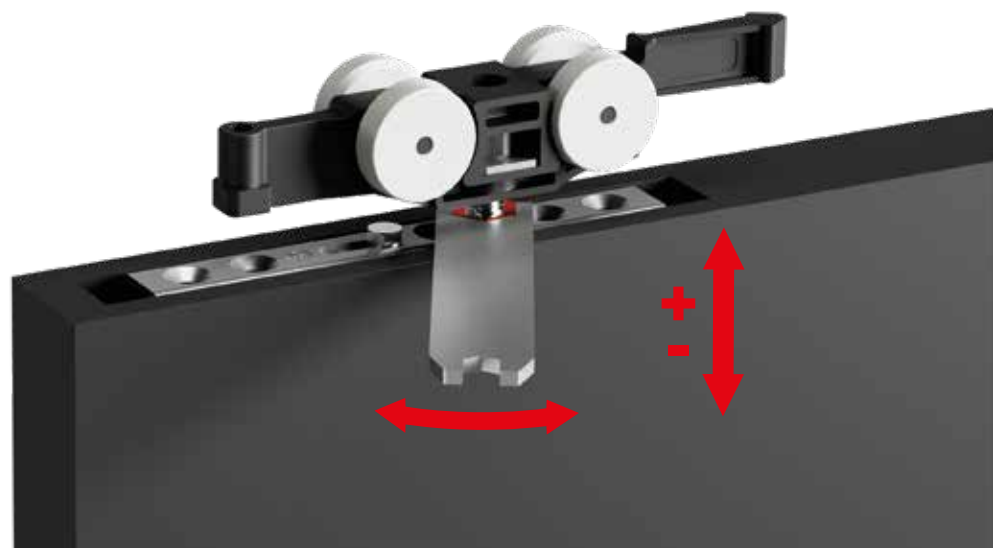
**4** Lock it  
Bloccare

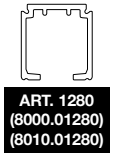
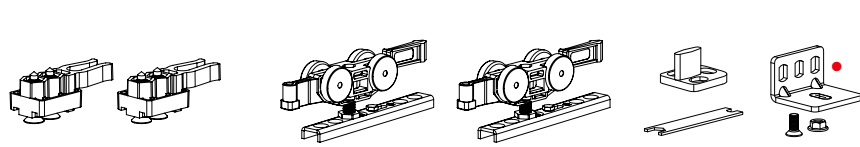


**5** Fix  
Fissaggio



**6** Adjusting  
Regolazione





**80 kg**

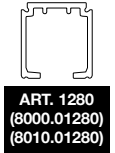
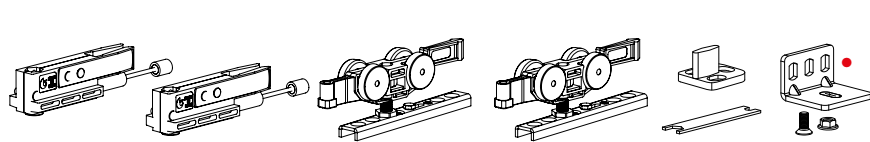


N.2 Basic standard stoppers  
N.2 Fermi a pinza Basic



Turned wheels  
Ruote tornite

			OLD CODE	NEW CODE		TRACK-BINARIO	
<b>KIT</b>	●	N° 5	80/T/G/SC/CON	K.080.12.5.C	Min. 600 mm	—	4x
		—	80/T/G/SC/SEN	K.080.12.5.S	Min. 600 mm	—	4x
<b>BLISTER</b>	●	N° 4	80/T/P/SC150CON	B.080.12.5.C150	600 ÷ 850 mm	1500 mm	4x
		N° 5	80/T/P/SC165CON	B.080.12.5.C165	850 ÷ 950 mm	1650 mm	4x
		N° 5	80/T/P/SC200CON	B.080.12.5.C200	950 ÷ 1100 mm	2000 mm	4x
		N° 6	80/T/P/SC250CON	B.080.12.5.C250	1100 ÷ 1350 mm	2500 mm	4x
		N° 7	80/T/P/SC300CON	B.080.12.5.C300	1350 ÷ 1600 mm	3000 mm	4x
		—	80/T/P/SC150SEN	B.080.12.5.S150	600 ÷ 850 mm	1500 mm	4x
		—	80/T/P/SC165SEN	B.080.12.5.S165	850 ÷ 950 mm	1650 mm	4x
		—	80/T/P/SC200SEN	B.080.12.5.S200	950 ÷ 1100 mm	2000 mm	4x
		—	80/T/P/SC250SEN	B.080.12.5.S250	1100 ÷ 1350 mm	2500 mm	4x
		—	80/T/P/SC300SEN	B.080.12.5.S300	1350 ÷ 1600 mm	3000 mm	4x



**80 kg**



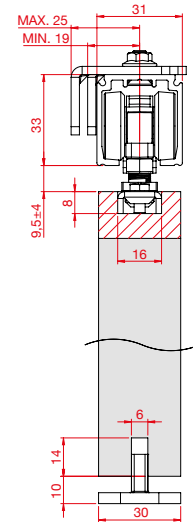
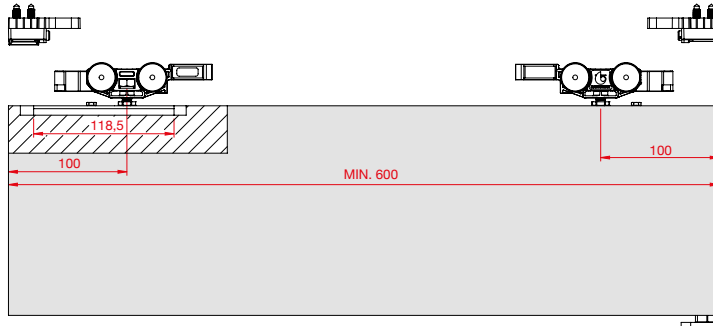
N.2 Shock absorber  
N.2 Fermi a pinza ammortizzati



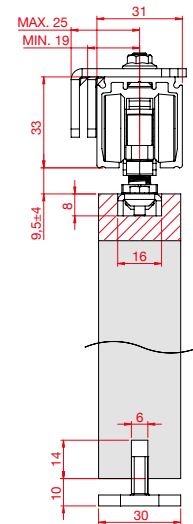
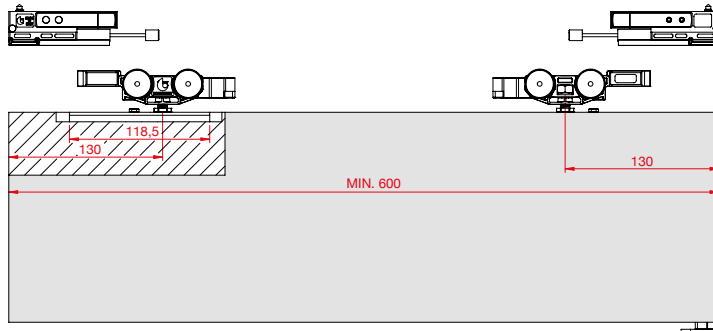
Turned wheels  
Ruote tornite

			OLD CODE	NEW CODE		TRACK-BINARIO	
<b>KIT</b>	●	N° 5	—	K.080.9.5.C	Min. 600 mm	—	4x
		—	—	K.080.9.5.S	Min. 600 mm	—	4x
<b>BLISTER</b>	●	N° 4	—	B.080.9.5.C150	600 ÷ 850 mm	1500 mm	4x
		N° 5	—	B.080.9.5.C165	850 ÷ 950 mm	1650 mm	4x
		N° 5	—	B.080.9.5.C200	950 ÷ 1100 mm	2000 mm	4x
		N° 6	—	B.080.9.5.C250	1100 ÷ 1350 mm	2500 mm	4x
		N° 7	—	B.080.9.5.C300	1350 ÷ 1600 mm	3000 mm	4x
		—	—	B.080.9.5.S150	600 ÷ 850 mm	1500 mm	4x
		—	—	B.080.9.5.S165	850 ÷ 950 mm	1650 mm	4x
		—	—	B.080.9.5.S200	950 ÷ 1100 mm	2000 mm	4x
		—	—	B.080.9.5.S250	1100 ÷ 1350 mm	2500 mm	4x
		—	—	B.080.9.5.S300	1350 ÷ 1600 mm	3000 mm	4x

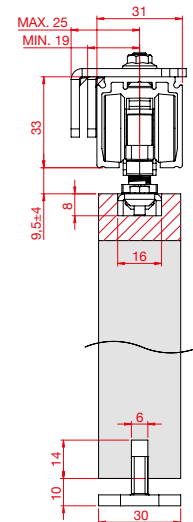
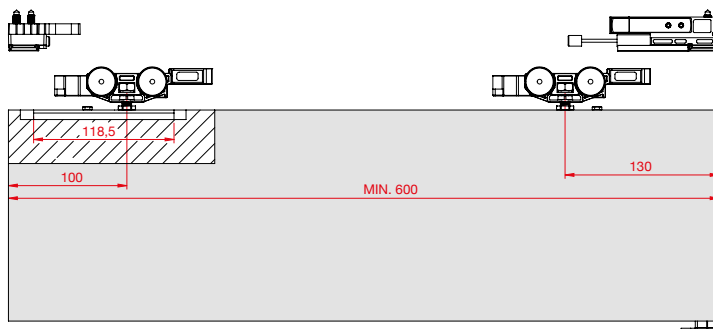
**N.2 Basic standard stoppers**  
**N.2 Fermi a pinza Basic**



**N.2 Shock absorber**  
**N.2 Fermi a pinza ammortizzati**



**N.1 Basic standard stopper + N.1 Shock absorber**  
**N.1 Fermo a pinza Basic + N.1 Fermo a pinza ammortizzato**



**50 kg**  
**80 kg**  
**120 kg**