

Scheda tecnica del prodotto



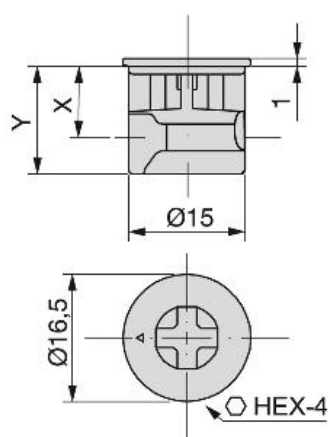
Eccentrico rinforzato con bordo

Eccentrico T15 Ø15

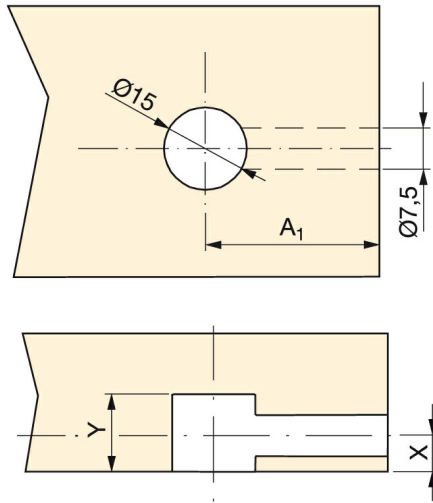
Specificazioni

X	Y			Cod.	Finitura
9	14	18		8007007	Nichelato
9	14	18		8007005	Zincato bianco
12.5	17.5	25		8006707	Nichelato

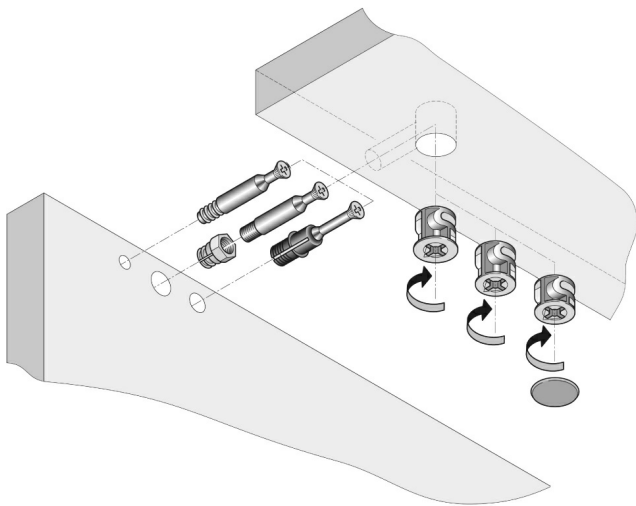
Schema



Montaggio





Goujon A	Usinage A ₁
23	24
27	28
33	34



Prodotti fondamentali

Eccentrico



X	Y			Cod.	Finitura
6.5	11	13	2500	8005401	Zama grezza


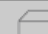
Eccentrico T15



X	Y			Cod.	Finitura
7,5	12	15	2.500	4358601	Zama grezza
8	12,5	16	2.500	4431105	Zincato bianco
8	12,5	16	2.500	4431109	Zincato nero
8	12,5	16	2.500	4431107	Nichelato
8	12,5	16	2.500	4431101	Zama grezza
9,5	14	19	2.500	4406905	Zincato bianco
9,5	14	19	2.500	4406909	Zincato nero
9,5	14	19	2.500	4406907	Nichelato
9,5	14	19	2.500	4406901	Zama grezza


Eccentrico rinforzato



X	Y			Cod.	Finitura
9,5	14	19	2500	8206905	Zincato bianco
9,5	14	19	2500	8206901	Zama grezza
12,5	17,5	25	1250	8006605	Zincato bianco

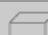
Tiranti ad anelli



A	Z	F		Cod.	Finitura
23	8	ITA 6MA	2500	5139805	Zincato bianco
23	9	Ø6	2500	5140005	Zincato bianco
27	8	ITA 6MA	2500	5139905	Zincato bianco
33	8	ITA 6MA	2500	5137705	Zincato bianco
33	11	Ø6	2500	5137605	Zincato bianco


Tirante pieno



A	Z	F		Cod.	Finitura
33	8	ITA 6MA	2500	5137905	Zincato bianco
33	11	Ø6	2500	5137805	Zincato bianco


Tirante con plastica



A	F	Z		Cod.	Finitura
33	11	Ø6	2500	5141305	Zincato bianco


Tirante Fit Ø8 ad espansione



A		Cod.	Finitura
21.6	2500	5912805	Zincato bianco
31.6	2500	5912905	Zincato bianco


Tiranti ad espansione Fit Ø10



Altezza		Cod.	Finitura
31,6	2.500	4013005	Zincato bianco


Tiranti ad espansione Spring Ø8



Altezza		Cod.	Finitura
34	2.500	4013205	Zincato bianco

Tirante doppio



A		Cod.	Finitura
16	500	5114505	Zincato bianco
19	500	5114605	Zincato bianco


Tirante snodato



	Cod.	Finitura
500	8044505	Zincato bianco

Copriforo per vite a cono



	Cod.	Finitura
1250	9040717	Plastica nera
1250	9040716	Plastica noce
1250	9040715	Plastica bianca