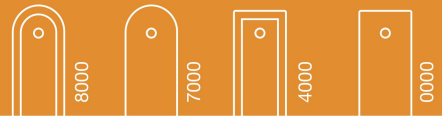


Gli articoli di queste pagine sono disponibili anche nelle serie:

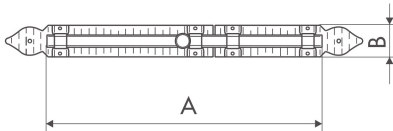
serie rotonda coniata 8000  
 serie rotonda 7000  
 serie piana 4000  
 serie quadra 0000



**ART. 1510**

**catenacci trasversali**

horizontal padlock  
 schubriegel  
 verrou horizontal

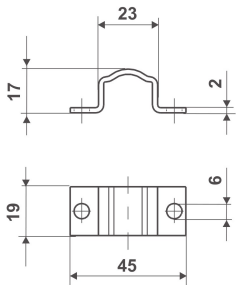


Articolo	A	B	Pz./Conf.
1510	220	47	6
1510	300	47	6
1510	400	47	6
1510	500	47	6

**ART. 1520**

**scontri per catenacci per art. 1509-4509-7509-8509**

bolt stops for item 1509-4509-7509-8509  
 schlaufe für Art. 1509-4509-7509-8509  
 gache pour verrous pour art. 1509-4509-7509-8509

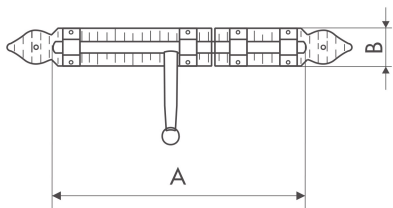


Articolo	Pz./Conf.
1520	50

**ART. 1543**

**catenacci tondi, impugnatura centrale**

round bolt locks with central handle  
 bolzenriegel  
 verrous ronds poignée centrale



Articolo	A	B	Pz./Conf.
1543	220	47	6
1543	300	47	6
1543	380	47	6