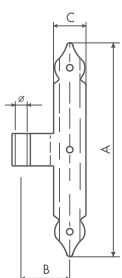
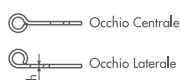


bandelle a "T"

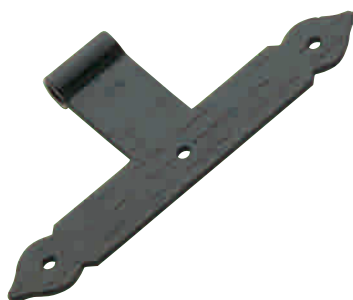
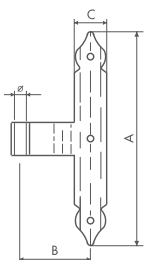
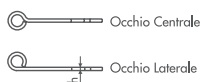
ART. 1346 Ø 10
ART. 1366 Ø 12
ART. 1386 Ø 14



bandelle a T
"T"-shaped hinge
T-förmiges band
penture en "T"

| Articolo | A | B | C | Ø | th | Pz./Conf. |
|----------|-----|----|----|----|-----|-----------|
| 1346 | 160 | 42 | 28 | 10 | 3 | 12 |
| 1346 | 200 | 45 | 30 | 10 | 3 | 12 |
| 1366 | 200 | 55 | 30 | 12 | 3.5 | 12 |
| 1366 | 250 | 55 | 30 | 12 | 3.5 | 12 |
| 1386 | 220 | 55 | 35 | 14 | 5 | 12 |

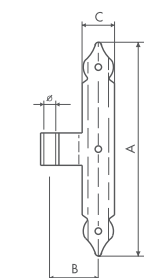
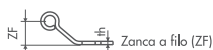
ART. 1346 collo lungo
ART. 1366 collo lungo



bandella a T, collo lungo
"T"-shaped, long eye-hole distance
T-förmiges band, langarmig
penture en "T", bras long

| Articolo | A | B | C | Ø | th | Pz./Conf. |
|------------------|-----|-----------|----|----|-----|-----------|
| 1346 collo lungo | 160 | 70 | 28 | 10 | 3 | 12 |
| 1346 collo lungo | 200 | 70 | 30 | 10 | 3 | 12 |
| 1366 collo lungo | 200 | 65 | 30 | 12 | 3.5 | 12 |
| 1366 collo lungo | 200 | su misura | 30 | 12 | 3.5 | 12 |

ART. 1346/zf Ø 10
ART. 1366/zf Ø 12



bandelle a T zanca a filo
"T"-shaped, 45° bent hinge
T-förmiges band mit bündiger Kröpfung
penture en "T" avec coudée à 45°

| Articolo | A | B | C | ZF | Ø | th | Pz./Conf. |
|----------|-----|----|----|------|----|-----|-----------|
| 1346 | 160 | 57 | 28 | 20.5 | 10 | 3 | 12 |
| 1346 | 200 | 57 | 30 | 20.5 | 10 | 3 | 12 |
| 1366 | 200 | 50 | 30 | 22.5 | 12 | 3.5 | 12 |
| 1366 | 250 | 50 | 30 | 22.5 | 12 | 3.5 | 12 |