

Sostituire # con finitura superficiale:

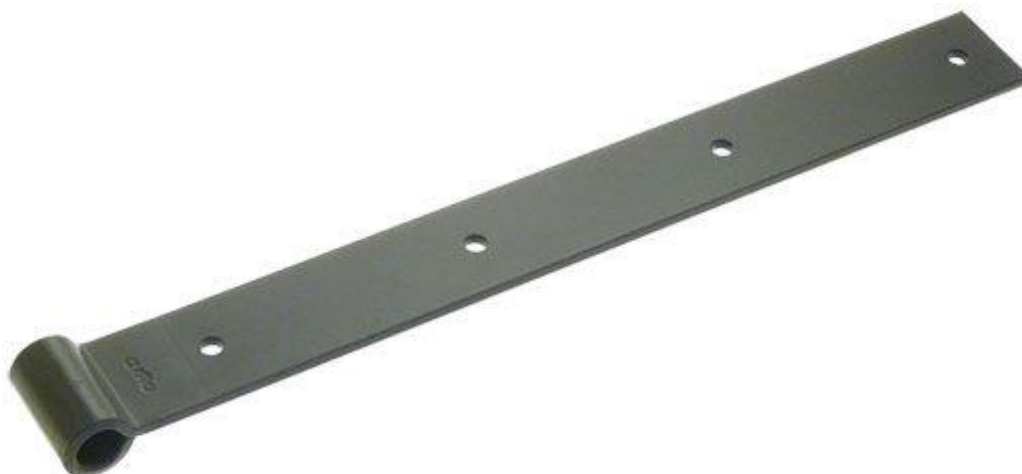
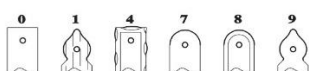
Y = Cataforesi + vern. nero

I = Iridizzato

Z = Zincato bianco

R = Colori RAL

Sostituire _ con numero serie:



Serie	A	R	th	Diametro
_246	400	40	5	14
_246	500	40	5	14
_246	600	40	5	14
_266	800	50	6	18
_266	1000	50	6	18