

# 2651

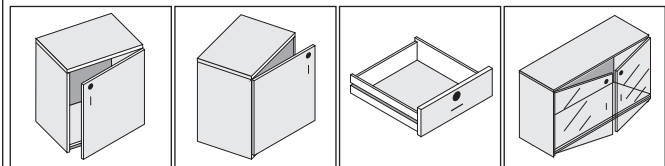
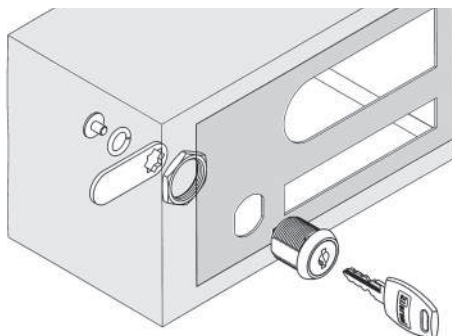
## SERRATURA UNIVERSALE CAM LOCK

SERIE  
**26**

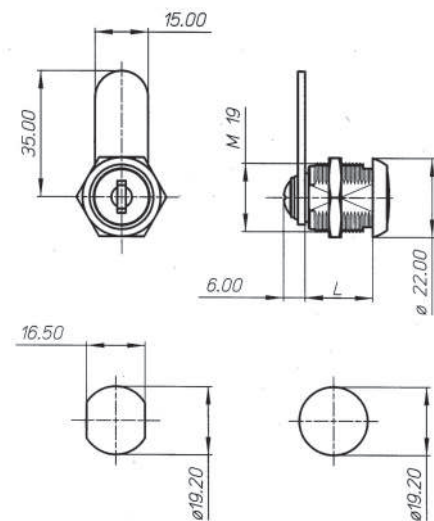
<b>2651</b>	2651	2651
<b>SERIE</b>	<b>SERIE</b>	<b>SERIES</b>
1	M1	M1
2	M2	M2
4	M4	M4
<b>FUNZIONAMENTO</b>	<b>OPERATION</b>	<b>OPERATION</b>
P	Rotazione 180°	Rotating 180°
D	Rotazione 90° DX	Rotating 90° R
<b>USCITA CHIAVE</b>	<b>KEY PULL</b>	<b>KEY PULL</b>
2	2 uscite chiave (180°)	2 key pull (180°)
1	1 uscita chiave (90° DX) (*)	1 key pull (90° R) (*)
<b>CORPO CILINDRO Ø M19</b>	<b>CYLINDER BODY Ø M19</b>	<b>CYLINDER BODY Ø M19</b>
"L"	"L"	"L"
11	mm 11 (*)	mm 11 (*)
16	mm 16 (*)	mm 16 (*)
20	mm 20	mm 20
25	mm 25	mm 25
30	mm 30	mm 30
<b>CIFRATURE</b>	<b>KEY-CHANGES</b>	<b>KEY-CHANGES</b>
M	Chiavi differenti sotto chiave maestra	Keyed differently under master-key
A	KA chiavi uguali	KA keyed alike
X	Gruppi di KA	Groups of KA
<b>CHIAVI</b>	<b>KEYS</b>	<b>KEYS</b>
	Standard	Standard
<b>FINITURE</b>	<b>FINISHES</b>	<b>FINISHES</b>
14	Nichelato	Nickel plated
<b>FISSAGGIO</b>	<b>FIXING</b>	<b>FIXING</b>
	Senza dado e clip	Without nut and clip
C	Con clip (**)	With clip (**)
D	Con dado	With nut
<b>LEVETTE</b> vedi pag 22	<b>CAMS</b> see page 22	<b>CAMS</b> see page 22
	Senza levetta	Without cam
35	Piana A35	Flat A35
<b>CONFEZIONI</b>	<b>PACKAGING</b>	<b>PACKAGING</b>
	Commercio 20 pz	Boxed in 20's
I	Industria 100 pz	Bulk in 100's

(\*) Cilindro non estraibile (\*) Core cylinder not removable  
 (\*\*) Spessore lamiera da 0,6 a 1,20 (\*\*) Plate thickness from 0,6 to 1,20

Accessori vetro vedi pagina / Glass accessories see page 70  
 Accessori vedi pagine / Accessories see pages 74  
 75  
 76



Con / With  
O870-O870G  
Per vetro  
For Glass



foro per metallo  
hole for metal

foro per legno  
hole for wood