

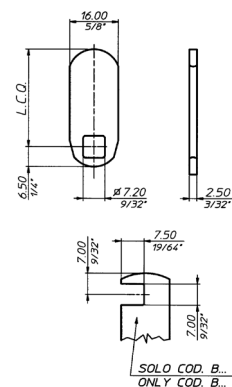
# 3LEVA51

# LEVETTE PER SERRATURE UNIVERSALI CAMs FOR CAM LOCKS

SERIE

O

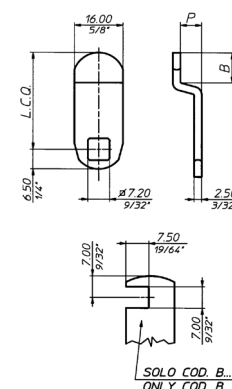
Codice Item	Piane - Flat			
	L.C.Q.		Peso - Weight	
	mm	inch	g (*)	ozs (*)
A0	32	1 17/64"	1070	37,74
A20	20	25/32"	700	24,69
A25	25	63/64"	850	29,98
A30	30	1 3/16"	1010	35,62
A35	35	1 3/8"	1150	40,56
A40	40	1 37/64"	1320	46,56
A45	45	1 49/64"	1480	52,20
A50	50	1 31/32"	1630	57,49
A60	60	2 23/64"	1950	68,78
B	32	1 17/64"	940	33,15



Levetta in ferro galvanizzato      Iron galvanized cam

(\*) Peso di 1 pz      (\*) Weight of 1's

Codice Item	Piegate - Bent							
	P		B		L.C.Q.		Peso - Weight	
	mm	inch	mm	inch	mm	inch	g	ozs
A3	3	1/8"	20,5	13/16"	38,5	1 33/64"	1290	45,50
A4	4	5/32"	21,5	27/32"	35	1 3/8"	1200	42,32
A5	5	13/64"	10,5	13/32"	36	1 27/64"	1230	43,38
A7	7	9/32"	10	25/64"	26	1 1/32"	1160	40,91
A10	10	25/64"	10,5	13/32"	36	1 27/64"	1370	48,32
A12	12	15/32"	8	5/16"	27,6	1 3/32"	1220	43,03
A15	15	19/32"	10,5	13/32"	36	1 27/64"	1490	52,55
A525	5	13/64"	10,5	13/32"	25	63/64"	900	31,74
A532	5	13/64"	6,5	1/4"	32	17/64"	1130	39,85
A635	6	16/64"	18,5	47/64"	35	1 3/8"	1300	45,85
A934	9	23/64"	16,5	41/64"	34	1 11/32"	1320	46,56
A1138	11	7/16"	18	45/64"	38	1 1/2"	1430	50,44
B5	5	13/64"	15	19/32"	32	17/64"	1040	36,68
B10	10	25/64"	15	19/32"	32	17/64"	1170	41,26
B15	15	19/32"	15	19/32"	32	17/64"	1360	47,97



Levetta in ferro galvanizzato      Iron galvanized cam

(\*) Peso di 1 pz      (\*) Weight of 1's