

2687

SERRATURA AD ASTE ROTANTI ESPAGNOLETTE LOCK

SERIE
26

2687 2687
2687S 2687 Sinistra

SERIE

0 Senza cilindro
1 M1
2 M2
4 M4

FISSAGGIO

A vite
A A pressione

SERRATURA IN ZAMA

14 Nichelato

FUNZIONAMENTO

Rotazione 90° + 90°

USCITA CHIAVE

2 2 uscite chiave

CORPO CILINDRO Ø 16,5

20 mm 20
25 mm 25
30 mm 30

CIFRATURE

M Chiavi differenti sotto chiave maestra
A KA chiavi uguali
X Gruppi di KA

CHIAVI

S Standard
A snodo

ENTRATA(*)

"E"
15 mm 15
20 mm 20
25 mm 25

ACCESSORI IN DOTAZIONE

1 ghiera

CONFEZIONI

I Commercio 20 pz
Industria 100 pz

(*) Misura 20 e 25 a richiesta

Accessori vedi pagine / Accessories see pages

2687
2687 Left

SERIES

Without cylinder core
M1
M2
M4

FIXING

Screw-on
Press-on

DIE CAST BODY

Nickel plated

OPERATION

Rotating 90° + 90°

KEY PULL

2 key pull

CYLINDER BODY Ø 16,5

mm 20
mm 25
mm 30

KEY-CHANGES

Keyed differently under master-key
KA keyed alike
Groups of KA

KEYS

Standard
Hinged

BACKSET(*)

"E"
mm 15
mm 20
mm 25

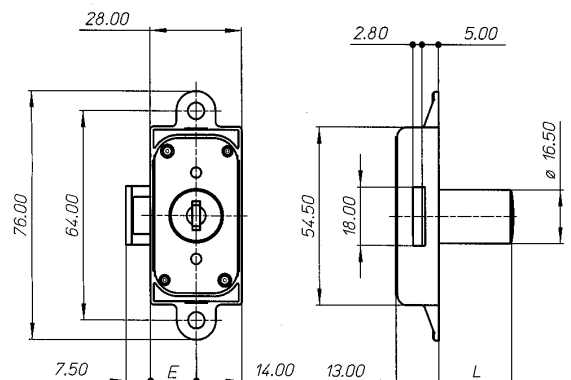
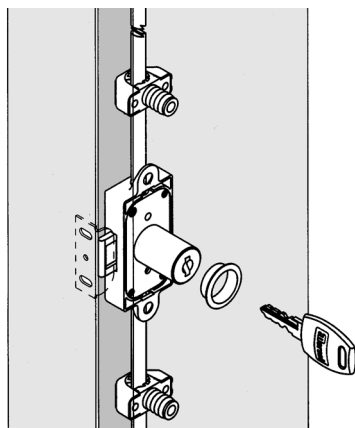
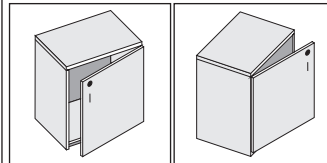
INCLUDED ACCESSORIES

1 ring

PACKAGING

Boxed in 20's
Bulk in 100's

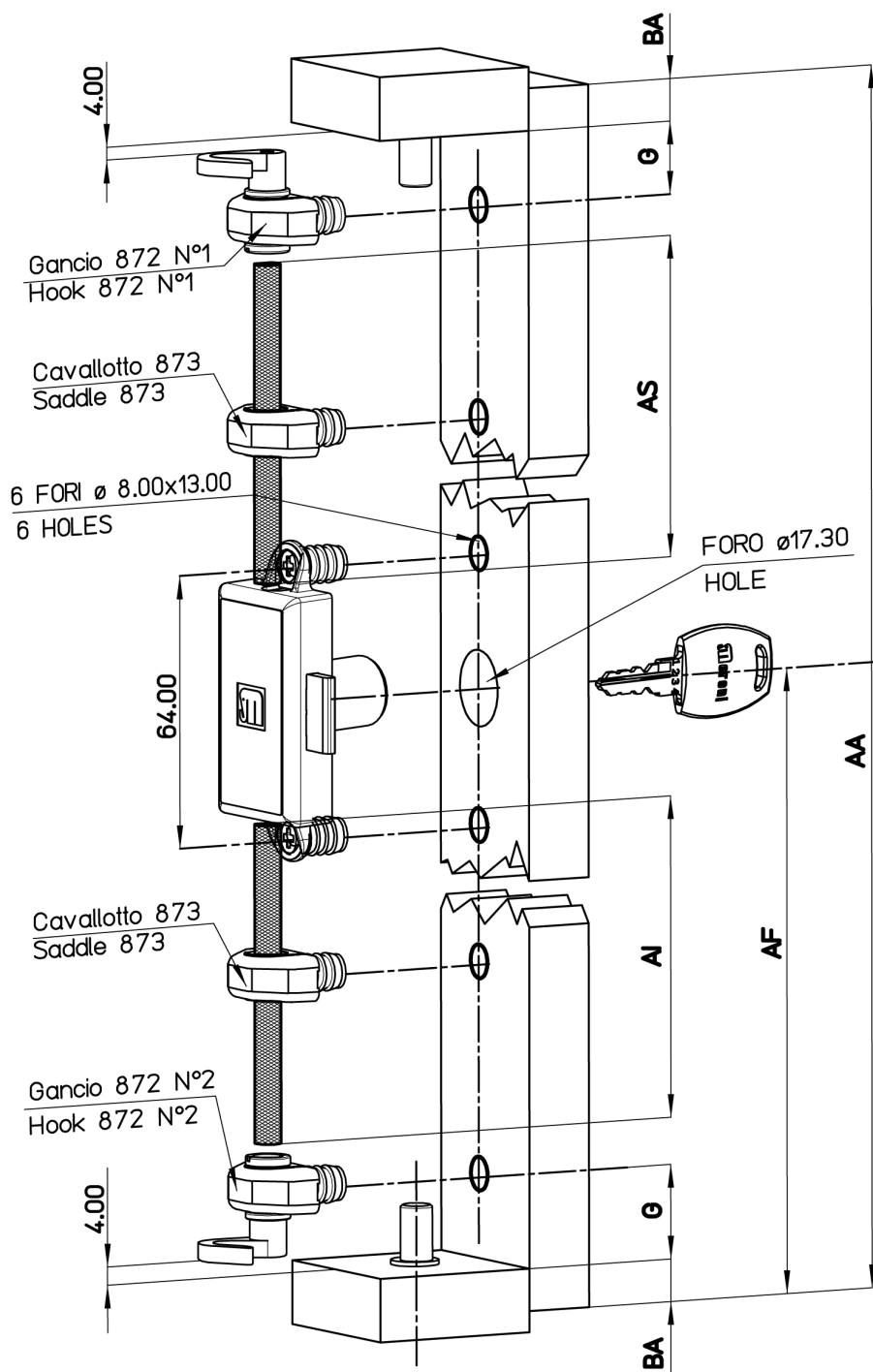
(*) Size 20 and 25 on request



65
66
67
68

Schema di montaggio art.2687 Assembling plan for art.2687

SERIE
26



	DESCRIZIONE
AA	DIMENSIONE ANTA
AF	DISTANZA FORO BOCCHETTA
AI	LUNGHEZZA ASTA INFERIORE
AS	LUNGHEZZA ASTA SUPERIORE
G	DISTANZA GANCI
BA	BATTUTA ANTA
C	QUOTA FISSA

C	25.00
G	20.00 ± 0.5
A	19.00 $\begin{matrix} 0 \\ -0.5 \end{matrix}$

\varnothing Serratura
 \varnothing Lock

ESEMPIO
AI = AF-BA-C
AS = AA-AF-BA-C

	DESCRIPTION
AA	DOOR SIZE
AF	ESCUTCHEON HOLE DISTANCE
AI	LOWER BAR LENGTH
AS	UPPER BAR LENGTH
G	HOOKS DISTANCE
BA	DOORSTOP
C	FIXED DIMENSION

