

Mec System.



MEC



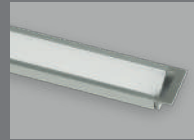
106
MEC 1



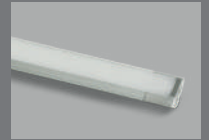
107
MEC 2



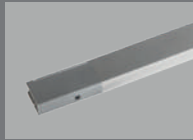
108
MEC 3



109
MEC 4



110
MEC 5



111
MEC DRAWER

MICRO
MEC



112
MICRO MEC
1



113
MICRO MEC
1 PLASTIC



114
MICRO MEC
2



115
MICRO MEC
3



116
MICRO MEC
3 PLASTIC



117
MEC RACK

LED
STRIP



118
LED STRIP
10 MM



119
LED STRIP
5 MM

FOCUS ON

Meccano: do it yourself.

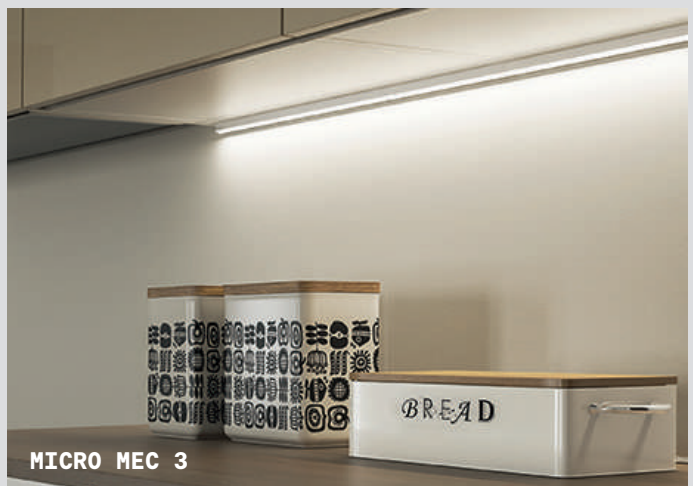
FLEXIBILITY,
REDUCED
DELIVERY TIMES,
CUSTOMISATION
OPTION



MEC 1



MEC 2

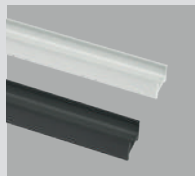
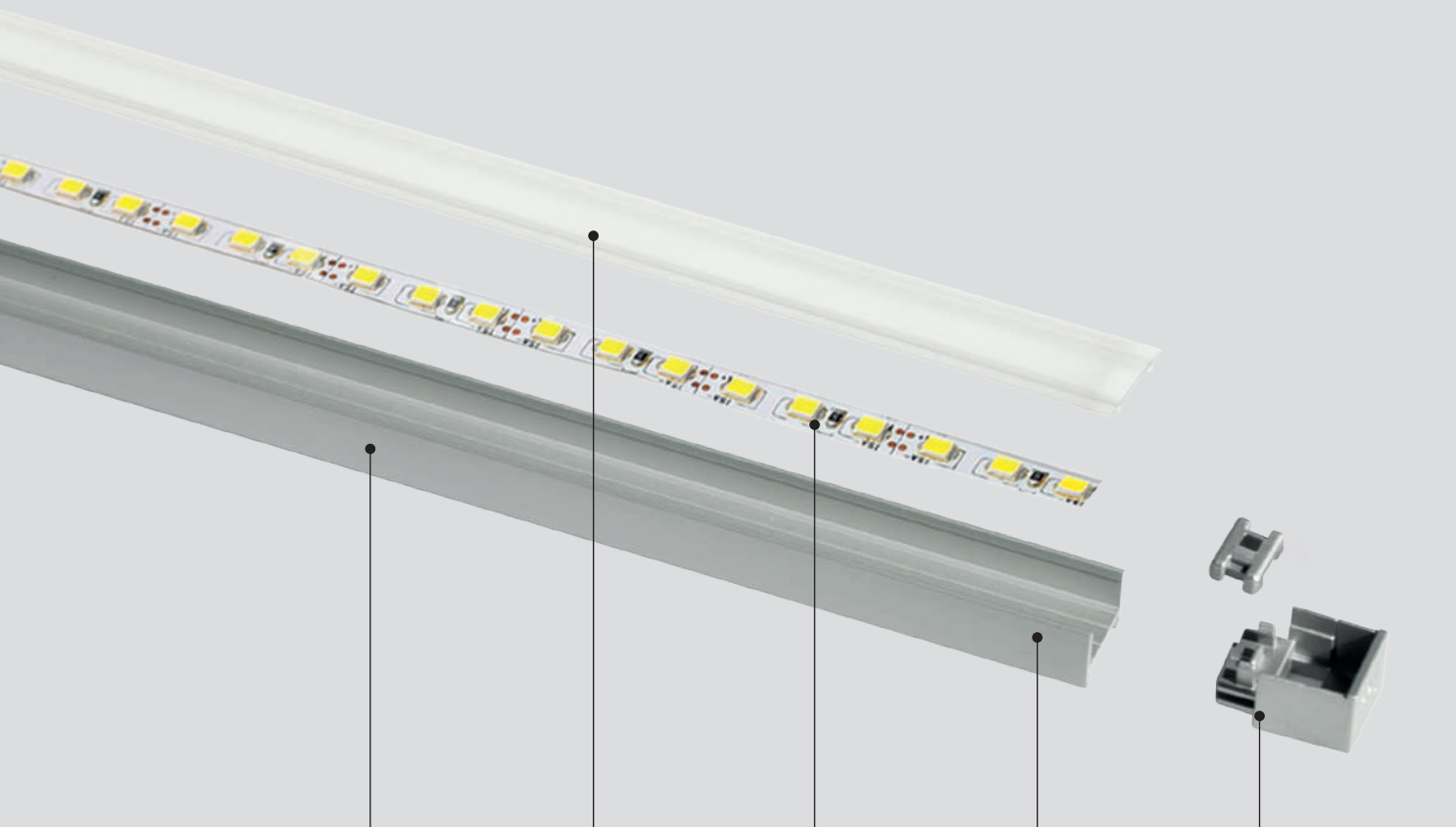


MICRO MEC 3

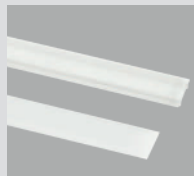
Meccano is the complete linear lighting programme that enables you to compose the most suitable lamp for your needs in total autonomy.

By combining the various profiles with compatible control screens and accessories, a fully customised and easily assembled luminaire can be created.

The dedicated connector allows the LED strips to be perfectly housed, which can be cut without the need for soldering, simplifying work and reducing material waste.



Anodised, natural or black painted aluminium profiles available for recessed or surface installation, with direct or inclined emission.



Transparent or opal polycarbonate diffuser.



Compatible 10 mm (Mec) and 5 mm (Micro Mec) LED strips, which can be sectioned off: the strips can be joined via a bridge connector.

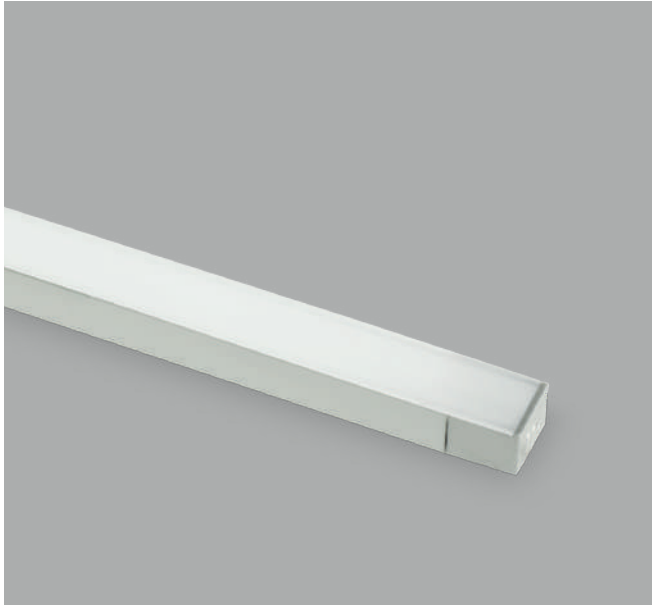


Optional sensors can be integrated in the header: IR, touch and PIR for Mec and IR for Micro Mec versions



Plastic end caps with clips for locking the strip.

Mec 1

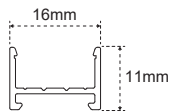


Anodised aluminium profile
 Surface installation
 Transparent or opal polycarbonate diffuser
 Symmetrical emission
 Anodised or black painted aluminium finish



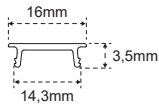
PROFILES

	19700280300	3 m
	19700281200	3 m



DIFFUSERS

Opaline	19700120100	3 m
Transp.	19700120000	3 m



END CAPS

	13201080300	2 x
	13201080000	2 x



FIXING BRACKET

13201110000

12 - 24 V SENSORS



IRS SENSOR

Mono: 12807550001
 EDC: 12808870001



TOUCH SENSOR

12807510001



PIR SENSOR

12807530001

ELECTRIFICATION AND CONTROL



STRIP REEL 10 mm

For the choice of Strip Reel go to page 118.



CONNECTION CORDS

Connection from lamp to ballast, includes two springs to join the pieces without soldering.

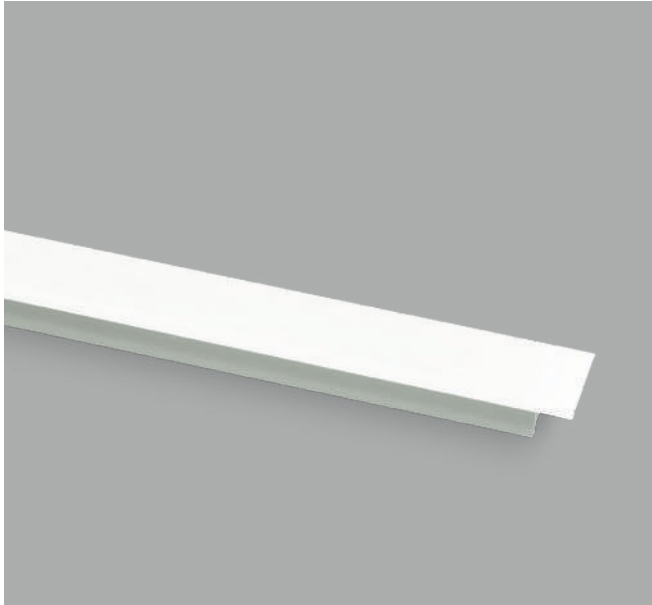
3 m - 12 V: 12603960000
 3 m - 24 V: 12603920000





MEC DRIVER

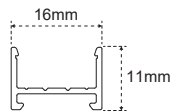
See page 262 for the choice of power supply system.

Mec 2



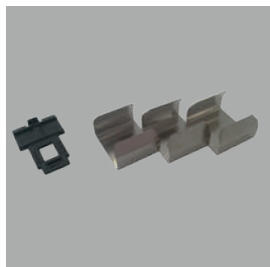
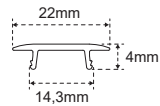
PROFILES

	19700280300	3 m
	19700281200	3 m



DIFFUSERS

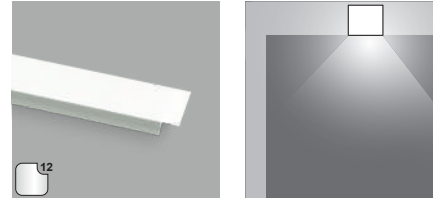
Opaline 19700130100	3 m
Transp. 19700130000	3 m



FIXING BRACKET

13201100000

Anodised aluminium profile
Recessed installation
Transparent or opal polycarbonate diffuser
Symmetrical emission
Anodised aluminium finish



12 - 24 V SENSORS



IRS SENSOR

Mono: 12807580001
EDC: 12808880001



TOUCH SENSOR

12807510001



PIR SENSOR

12807570001

ELECTRIFICATION AND CONTROL



STRIP REEL 10 mm

For the choice of Strip Reel go to page 118.



CONNECTION CORDS

Connection from lamp to ballast, includes two springs to join the pieces without soldering.

3 m - 12 V: 12603960000
3 m - 24 V: 12603920000



MEC DRIVER

See page 262 for the choice of power supply system.



Mec 3

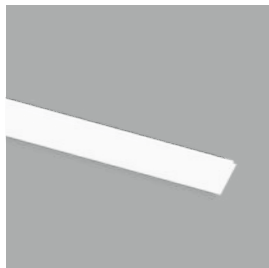
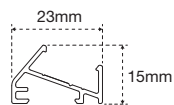


Anodised aluminium profile
Surface installation
Transparent or opal polycarbonate diffuser
Inclined emission
Anodised or black painted aluminium finish



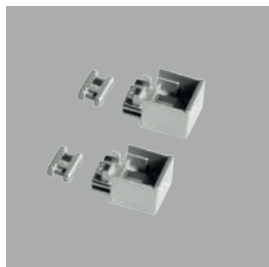
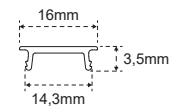
PROFILES

	19700290300	3 m
	19700291200	3 m





DIFFUSERS

Opaline	19700120100	3 m
Transp.	19700120000	3 m



END CAPS

	13201090300	2 x
	13201090000	2 x



FIXING BRACKET

13201110000

12 - 24 V SENSORS



IRS SENSOR

Mono: 12807550001
EDC: 12808870001



TOUCH SENSOR

12807510001



PIR SENSOR

12807530001

ELECTRIFICATION AND CONTROL



STRIP REEL 10 mm

For the choice of Strip Reel go to page 118.



CONNECTION CORDS

Connection from lamp to ballast, includes two springs to join the pieces without soldering.

3 m - 12 V: 12603960000
3 m - 24 V: 12603920000





MEC DRIVER

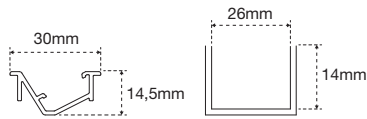
See page 262 for the choice of power supply system.

Mec 4



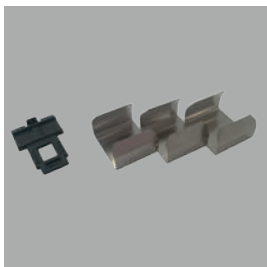
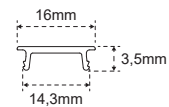
PROFILES

	19800480300	3 m
	19800481200	3 m





DIFFUSERS

Opaline 19700120100	3 m
Transp. 19700120000	3 m



FIXING KIT

	13201280300
	13201280000

Anodised aluminium profile
Recessed installation
Transparent or opal polycarbonate diffuser
Symmetrical emission
Anodised aluminium finish



12 - 24 V SENSORS



IRS SENSOR

Mono: 12807550001
EDC: 12808870001



TOUCH SENSOR

12807510001



PIR SENSOR

12807570001

ELECTRIFICATION AND CONTROL



STRIP REEL 10 mm

For the choice of Strip Reel go to page 118.



CONNECTION CORDS

Connection from lamp to ballast, includes two springs to join the pieces without soldering.

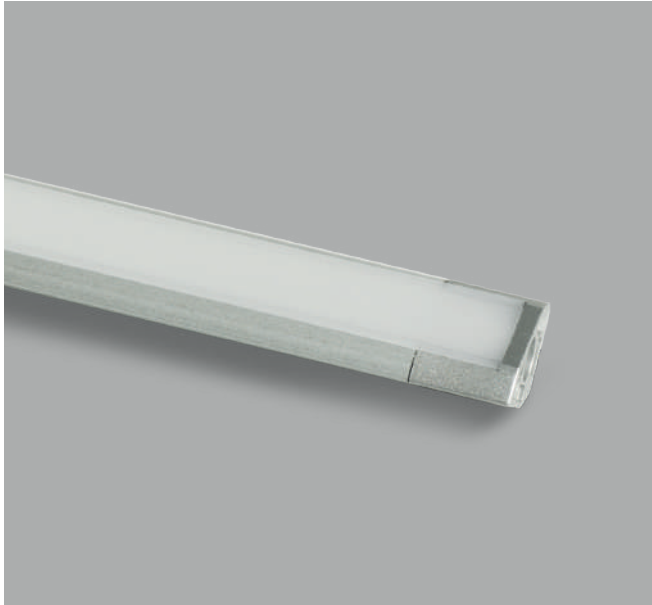
3 m - 12 V: 12603960000
3 m - 24 V: 12603920000



MEC DRIVER

See page 262 for the choice of power supply system.



Mec 5

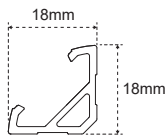


Anodised aluminium profile
 Surface corner installation
 Transparent or opal polycarbonate diffuser
 Inclined emission
 Anodised or black painted aluminium finish



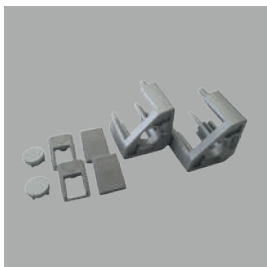
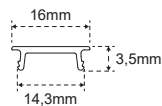
PROFILES

 03	19800490300	3 m
 12	19800491200	3 m





DIFFUSERS

Opaline	19700120100	3 m
Transp.	19700120000	3 m



END CAPS

 03	13201290300	2 x
 12	13201290000	2 x

12 - 24 V SENSORS



IRS SENSOR

Mono: 12807550001
 EDC: 12808870001



TOUCH SENSOR

12807510001



PIR SENSOR

12807530001

ELECTRIFICATION AND CONTROL



STRIP REEL 10 mm

For the choice of Strip Reel go to page 118.



CONNECTION CORDS

Connection from lamp to ballast, includes two springs to join the pieces without soldering.

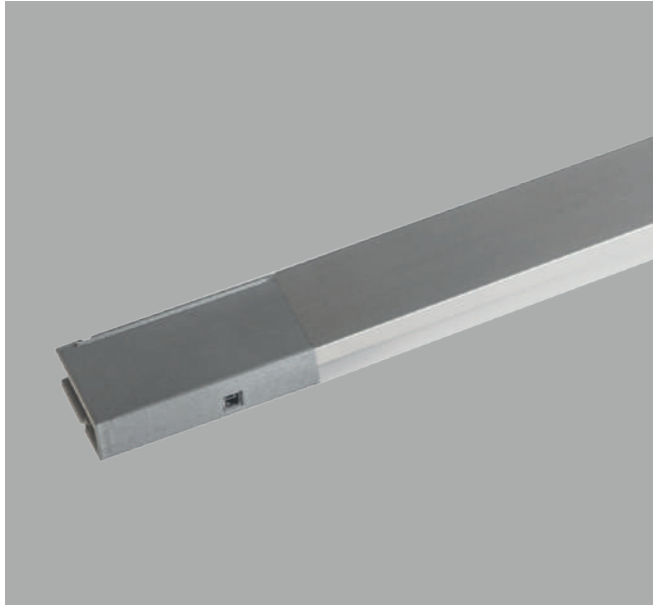
3 m - 12 V: 12603960000
 3 m - 24 V: 12603920000



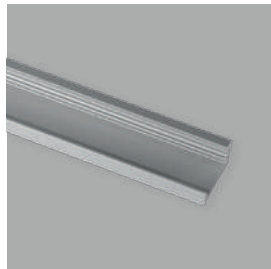
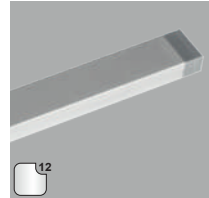
MEC DRIVER

See page 262 for the choice of power supply system.


Mec Drawer

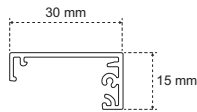


Anodised aluminium profile
 Surface installation
 Opal polycarbonate diffuser
 Inclined emission
 Anodised aluminium finish
 IR Door sensor



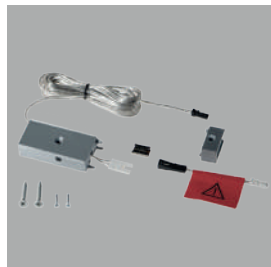
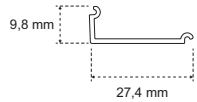
PROFILES

 **19801151200** 3 m




DIFFUSERS

Opaline 19700980100 3 m

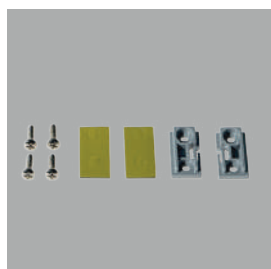


END CAPS

 **13201911000**

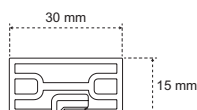


IR Door sensor included.



FIXING KIT

13201920000



ELECTRIFICATION AND CONTROL



STRIP REEL 10 mm
 For the choice of Strip Reel go to page 118.



MEC DRIVER
 See page 262 for the choice of power supply system.

Micro Mec 1

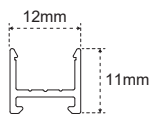


Anodised aluminium profile
 Surface installation
 Transparent or opal polycarbonate diffuser
 Symmetrical emission
 Anodised or black painted aluminium finish



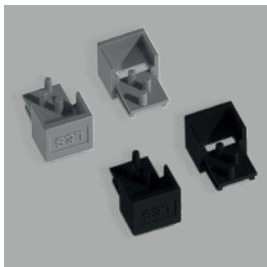
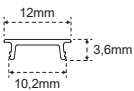
PROFILES

	19800890300	3 m
	19800891200	3 m



DIFFUSERS

Opaline 19700760100	3 m
Transp. 19700760000	3 m



END CAPS

	13201660300	2 x
	13201661000	2 x



FIXING BRACKET

13201710000

12 - 24 V SENSORS

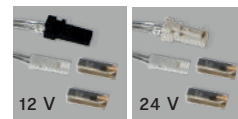


IRS SENSOR
 24201140000

ELECTRIFICATION AND CONTROL



STRIP REEL 5 mm
 For the choice of Strip Reel go to page 119.



CONNECTION CORDS
 Connection from lamp to ballast, includes two springs to join the pieces without soldering.

3 m - 12 V: 12606220000
 3 m - 24 V: 12606230000

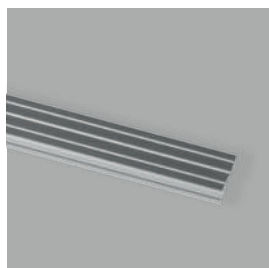
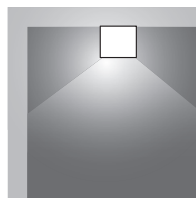


MEC DRIVER
 See page 262 for the choice of power supply system.


Micro Mec 1 Plastic

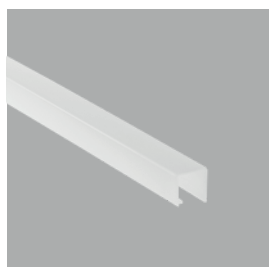
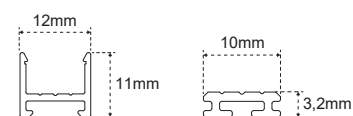


Aluminium reel plate
Surface installation
Opal polycarbonate diffuser
Symmetrical emission
The Mec Profi accessory, sold separately, allows you to create a backlight effect on shelves



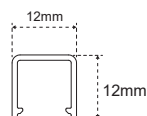
PROFILES

	19800911200	3 m
---	-------------	-----



DIFFUSERS

	Opaline 19700740100	3 m
--	---------------------	-----








END CAPS

	13201670100	2 x
--	-------------	-----

Plastic end caps and double-sided adhesive strips for surface application



TWILIGHT PROFI

L: 3 m		19800920300
15 x 20 mm		19800921200
L: 3 m		19800930300
20 x 20 mm		19800931200
L: 3 m		19800940300
30 x 20 mm		19800941200

12 - 24 V SENSORS



IRS SENSOR
24201150000

ELECTRIFICATION AND CONTROL



STRIP REEL 5 mm
For the choice of Strip Reel go to page 119.

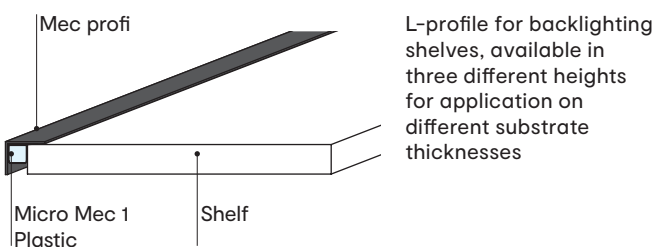


CONNECTION CORDS
Connection from lamp to ballast, includes two springs to join the pieces without soldering.

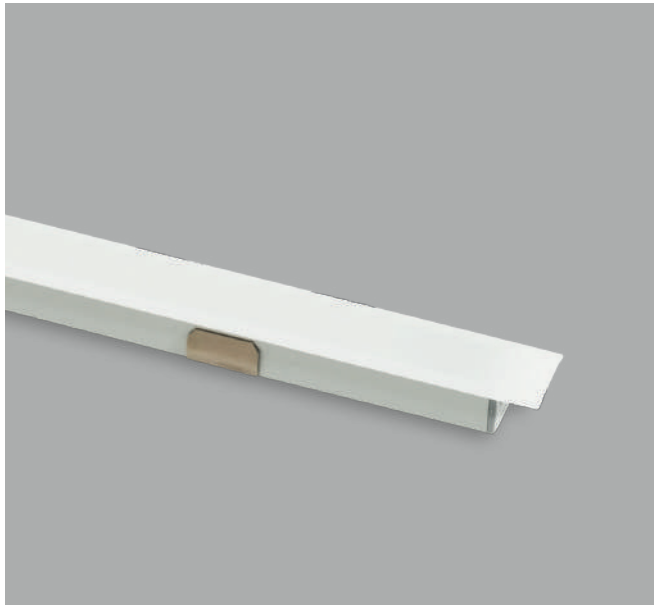
3 m - 12 V: 12606220000
3 m - 24 V: 12606230000



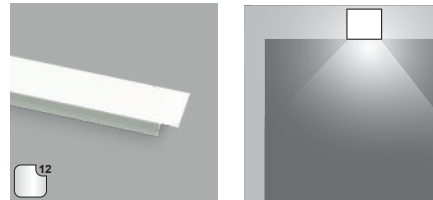
MEC DRIVER
See page 262 for the choice of power supply system.



Micro Mec 2





Anodised aluminium profile
 Recessed installation
 Transparent or opal polycarbonate diffuser
 Symmetrical emission
 Anodised aluminium finish

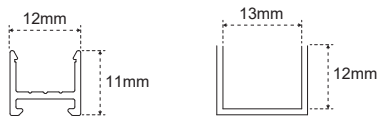


&



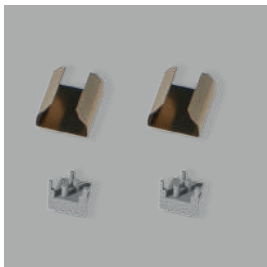
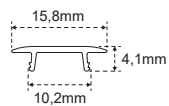
PROFILES

	19800890300	3 m
	19800891200	3 m



DIFFUSERS

Opaline 19700770100	3 m
Transp. 19700770000	3 m



FIXING BRACKET

13201681000

12 - 24 V SENSORS



IRS SENSOR

24201130000

ELECTRIFICATION AND CONTROL



STRIP REEL 5 mm

For the choice of Strip Reel go to page 119.



CONNECTION CORDS

Connection from lamp to ballast, includes two springs to join the pieces without soldering.

3 m - 12 V: 12606220000

3 m - 24 V: 12606230000



MEC DRIVER

See page 262 for the choice of power supply system.

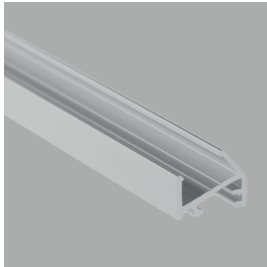
Micro Mec 3





Anodised aluminium profile
 Surface installation
 Transparent or opal polycarbonate diffuser
 Inclined emission
 Anodised or black painted aluminium finish

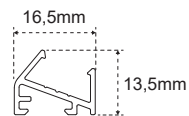


&



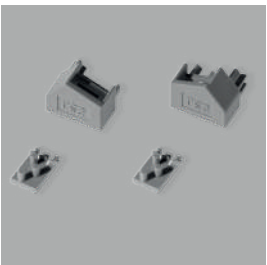
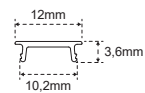
PROFILES

	19700900300	3 m
	19700901200	3 m





DIFFUSERS

Opaline 19700760100	3 m
Transp. 19700760000	3 m



END CAPS

	13201690300	2 x
	13201691000	2 x



FIXING BRACKET

13201710000

12 - 24 V SENSORS



IRS SENSOR

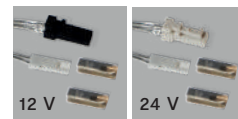
24201140000

ELECTRIFICATION AND CONTROL



STRIP REEL 5 mm

For the choice of Strip Reel go to page 119.



CONNECTION CORDS

Connection from lamp to ballast, includes two springs to join the pieces without soldering.

3 m - 12 V: 12606220000

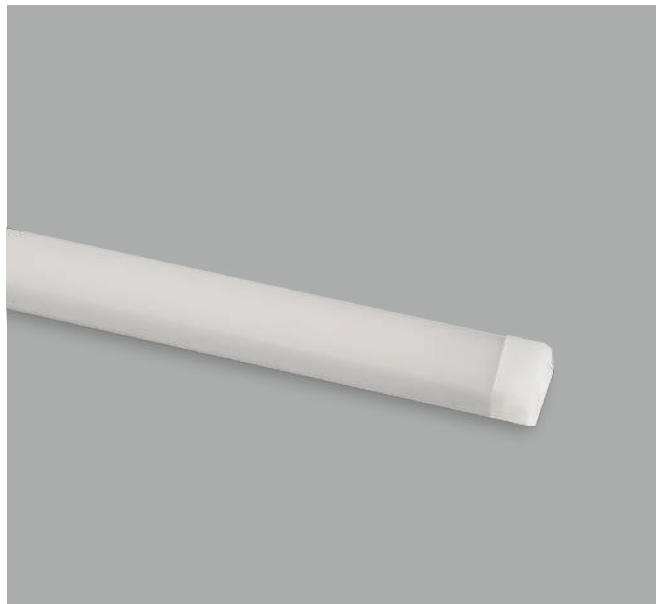
3 m - 24 V: 12606230000



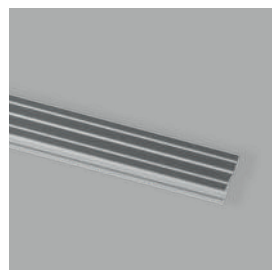
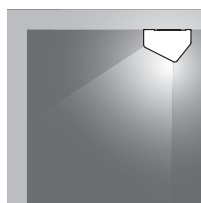
MEC DRIVER

See page 262 for the choice of power supply system.


Micro Mec 3 Plastic

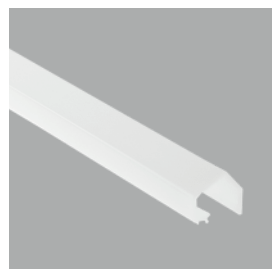
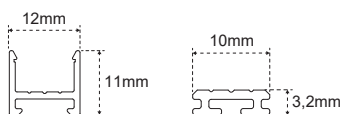


Aluminium reel plate
 Surface installation
 Opal polycarbonate diffuser
 Symmetrical emission
 The Mec Profi accessory, sold separately, allows you to create a backlight effect on shelves



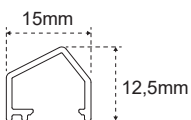
PROFILES

 **19800911200** 3 m



DIFFUSERS

Opaline 19700750000 3 m



END CAPS

13201700100 2 x

Plastic end caps and double-sided adhesive strips for surface application

12 - 24 V SENSORS



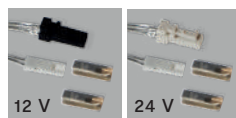
IRS SENSOR left
 24201160000

IRS SENSOR right
 24201160000

ELECTRIFICATION AND CONTROL



STRIP REEL 5 mm
 For the choice of Strip Reel go to page 119.



CONNECTION CORDS
 Connection from lamp to ballast, includes two springs to join the pieces without soldering.

3 m - 12 V: 12606220000
 3 m - 24 V: 12606230000



MEC DRIVER
 See page 262 for the choice of power supply system.

Mec Rack



Anodised aluminium profile
 Installation inside surface cabinets
 Opal polycarbonate diffuser
 Symmetrical emission
 Anodised or black painted aluminium finish





Black

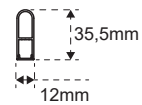


Aluminium



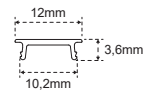
PROFILES

	19801010300	3 m
	19801011200	3 m





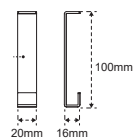
DIFFUSERS

Opaline 19700760100	3 m
---------------------	-----



CENTRAL BRACKET

	13201780300
	13201786500

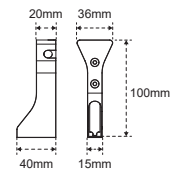


For profile lengths
 > 90 cm



END CAPS

	13201750300	-
	13201756500	-
	13201760300	PIR left
	13201766500	PIR left
	13201770300	PIR right
	13201776500	PIR right



ELECTRIFICATION AND CONTROL



STRIP REEL 5 mm
 For the choice of Strip Reel go to page 119.

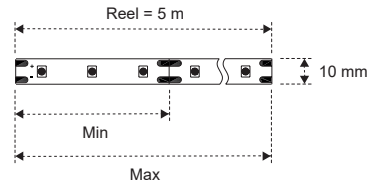


MEC DRIVER
 See page 262 for the choice of power supply system.

Strip reel 10 mm



Strip Reel is a line of flexible printed circuit boards suitable for decorative lighting and integration with Mec profiles. Supplied in 5 m sectionable coils, they are available in 12 or 24 VDC, in various densities (LEDs/m) and with Cold (6500K), Natural (4000K), Warm (3000K, 2700K) or Dual Colour Emotion colour temperature that allows the variation from 3000K to 4000K.



STRIP REEL 12 V

	LEDs/m	W/m	L. Min \ Max	CCT
12807400001G_	72	7,8	42 mm \ 4,6 m	_C \ _N \ _W
12807410001C_	108	11,7	27,8 mm \ 3,1 m	_C \ _N \ _W
12807420001E_	156	16,9	19,2 mm \ 2,1 m	_C \ _N \ _W
12808490002AGD	120 + 120	13	25 mm \ 2,8 m	EDC

CABLES AND CONNECTORS



Power cable from lamp to 12 V power supply, includes two springs to join the pieces without welding.
L: 3 m
12603960000



Extension from output cable to power supply 12 V
L: 1100 mm
12604220000
L: 2200 mm
12604230000



Reversing the polarity of the connector changes colour from warm to natural (only for 12 V EDC version)
L: 50 mm
12605010000



Soft link lamp-to-lamp connection for both 12 V and 24 V.
L: 10 cm
12603930000
L: 40 cm
12603940000
L: 70 cm
12603950000



Bridge connector for strip segments
19700450100



FIXED COLOUR TEMPERATURE
Add the suffix **_C** for cold white (6500K), **_N** for natural white (4000K) or **_W** for warm white (3000K) to the product code



MEC DRIVER
For the selection of the power supply system go to page 262

STRIP REEL 24 V

	LEDs/m	W/m	L. Min \ Max	CCT
12808190001N_	72	7,8	84 mm \ 9,2 m	_C \ _N \ _W
12808180001M_	108	11,7	55,6 mm \ 6,2 m	_C \ _N \ _W
12807430001I_	156	16,9	38,4 mm \ 4,2 m	_C \ _N \ _W
12809490000NW	72	7,8	84 mm \ 9,2 m	2700K
12809690000MW	108	11,7	55,6 mm \ 6,2 m	2700K
12809700000IW	156	16,9	38,4 mm \ 4,2 m	2700K
12808860002AHD	120 + 120	13	50 mm \ 5,6 m	EDC

CABLES AND CONNECTORS



Power cable from lamp to 24 V power supply, includes two springs to join the pieces without welding.
L: 3 m
12603920000



Extension from output cable to power supply 24 V
L: 1100 mm
12604630000
L: 2200 mm
12604620000



Reversing the polarity of the connector changes colour from warm to natural (only for 24 V EDC version)
L: 50 mm
12605020000



Soft link lamp-to-lamp connection for both 12 V and 24 V.
L: 10 cm
12603930000
L: 40 cm
12603940000
L: 70 cm
12603950000



Bridge connector for strip segments
19700450100

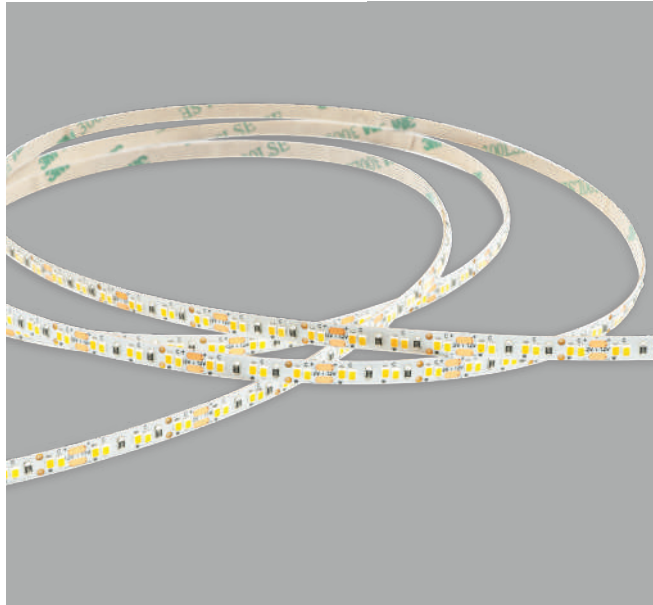


FIXED COLOUR TEMPERATURE
Add the suffix **_C** for cold white (6500K), **_N** for natural white (4000K) or **_W** for warm white (3000K) to the product code

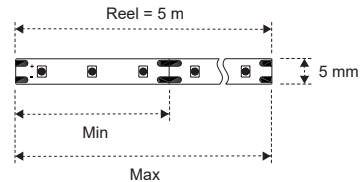


MEC DRIVER
For the selection of the power supply system go to page 262

Strip reel 5 mm




Strip Reel is a line of flexible printed circuit boards suitable for decorative lighting and integration with Micro Mec profiles. Supplied in 5 m sectionable coils, they are available in 12 or 24 VDC, in various densities (LEDs/m) and with Natural (4000K), Warm (3000K) or Dual Colour Emotion colour temperature that allows the variation from 3000K to 4000K.





STRIP REEL 12 V


	LEDs/m	W/m	L. Min \ Max	CCT
12810230000AN_	180	13	25 mm \ 2,8 m	_N \ _W
12809720000AUD	120 + 120	13	25 mm \ 2,8 m	EDC


CABLES AND CONNECTORS

 Power cable from lamp to 12 V power supply, includes two springs to join the pieces without welding. L: 3 m
12606220000

 Reversing the polarity of the connector changes colour from warm to natural (only for 12 V EDC version) L: 50 mm
12605010000

 Soft link lamp-to-lamp connection for both 12 V and 24 V. L: 10 cm
12606240000
L: 40 cm
12606250000
L: 70 cm
12606260000


 **FIXED COLOUR TEMPERATURE**
Add the suffix **_N** for natural white (4000K) or **_W** for warm white (3000K) to the product code


 **MEC DRIVER**
For the selection of the power supply system go to page 262


STRIP REEL 24 V


	LEDs/m	W/m	L. Min \ Max	CCT
12810240000AM_	180	13	50 mm \ 5,6 m	_N \ _W
12809730000APD	120 + 120	13	50 mm \ 5,6 m	EDC


CABLES AND CONNECTORS

 Power cable from lamp to 24 V power supply, includes two springs to join the pieces without welding. L: 3 m
12606230000

 Reversing the polarity of the connector changes colour from warm to natural (only for 24 V EDC version) L: 50 mm
12605020000

 Soft link lamp-to-lamp connection for both 12 V and 24 V. L: 10 cm
12606240000
L: 40 cm
12606250000
L: 70 cm
12606260000

 **FIXED COLOUR TEMPERATURE**
Add the suffix **_N** for natural white (4000K) or **_W** for warm white (3000K) to the product code

 **MEC DRIVER**
For the selection of the power supply system go to page 262