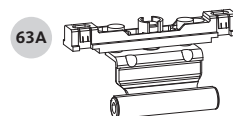
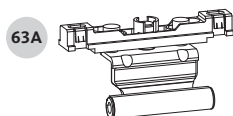
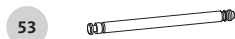
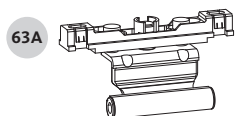
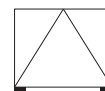


UNI-JET D – Tilt-Only sash – handle horizontal at top

Max. sash weight 80 kg

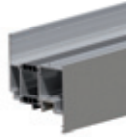
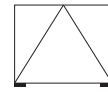


Tested hardware load-bearing capacity

- Max. 80 kg
- Application diagram 0-46854
- Installation drawing for hinge-side 0-46795
- SRW = 480–2400 mm
- SRH = 260–1200 mm

UNI-JET D – Tilt-Only sash – handle horizontal at top

Max. sash weight 80 kg



Tilt-Only hinge [1]

Item	AX [mm]	OL [mm]	System	PU	Order number
63A	9	18	12/18-9	100	6-36838-18-0-1
		20	12/20-9	100	6-36838-20-0-1
	13	18	12/18-13	100	6-36839-18-0-1
		20	12/20-13	100	6-36839-20-0-1

Stay-bearing

Item	Positioning pin	PU	Order number
51A	Ø 3 mm, L = 2.5 mm	100	6-36026-03-0-1
	Ø 6 mm, L = 2.5 mm	100	6-36026-06-0-1

Stay-bearing pin

Item	PU	Order number
53	100	9-48898-00-0-1

Cover cap for stay-hinge

Item	PU	Order number
80A	100	9-47795-01-0-1

Cover cap for stay-bearing

Item	PU	Order number
81A	100	9-47334-01-0-1

[1] SRW < 1200 mm, 2 pcs Tilt-Only hinges.
 SRW > 1201 mm, 3 pcs Tilt-Only hinges.
 See installation drawing 0-46795.

You will find further versions and finishes
 in Chapter 'Individual components' from page 550.