

NP SUPRA - MOVIMENTAZIONE ANTA



Funzioni

Meccanismo bidirezionale, azionabile tramite manovra NP SUPRA, per la movimentazione dei meccanismi di chiusura ad Anta.

Scheda tecnica on-line

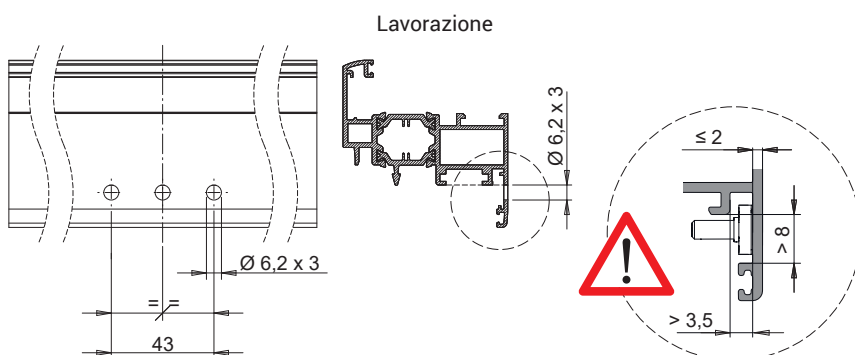
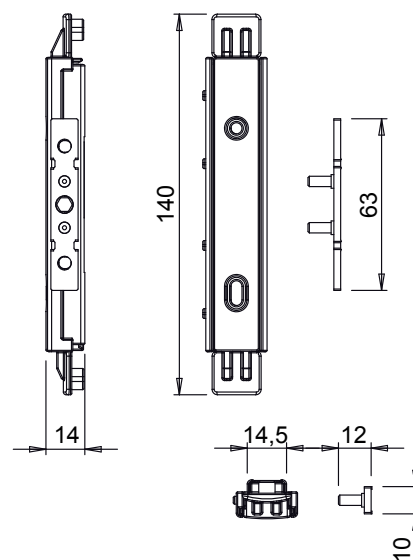


Caratteristiche Tecniche

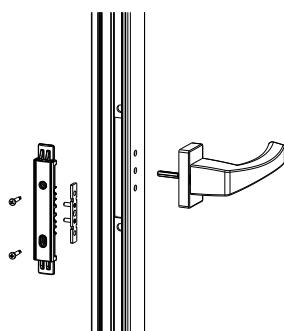
Si utilizza in abbinamento alla manovra NP SUPRA (esagono 5 mm).
 Si blocca al profilo tramite 2 viti autoforanti in dotazione.
 Non sono necessarie lavorazioni di fresatura sulla tubolarità dell'anta ma è sufficiente una semplice lavorazione sull'aletta (3 fori Ø6,2 mm).
 La movimentazione è ambidestra.

Materiali

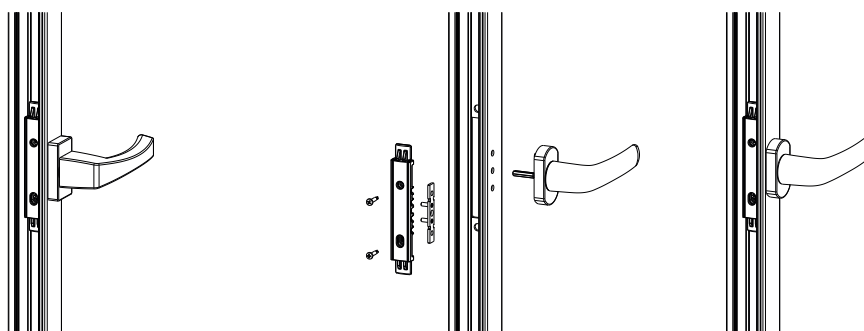
Corpo, Traino (superiore e inferiore) in zama finitura GS SILVER PLUS.
 Pignone e viti 3,9 x 19 in acciaio zincato.
 Piastrino di fissaggio in acciaio inox.



Manovra Asia

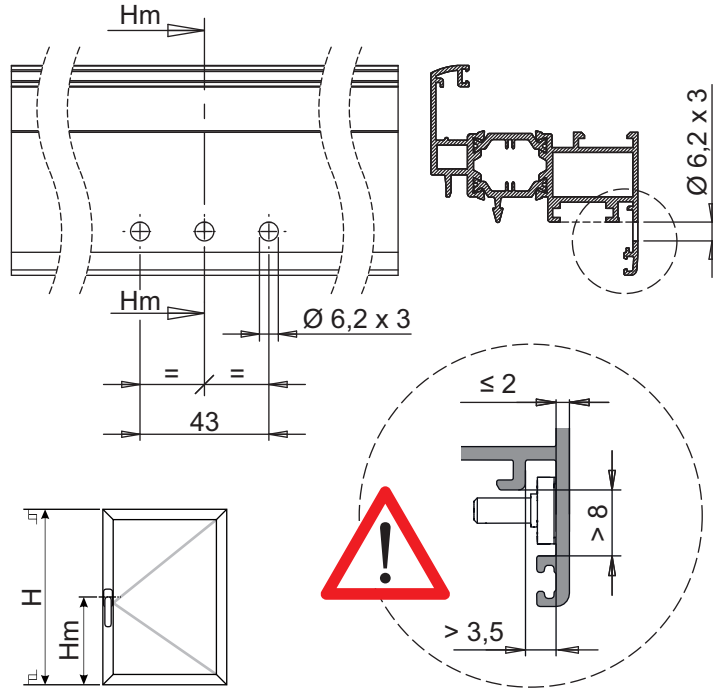
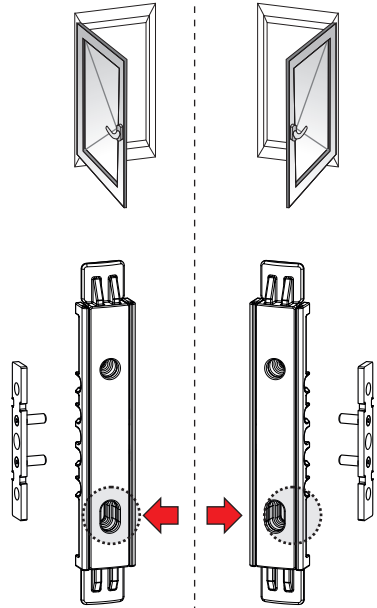
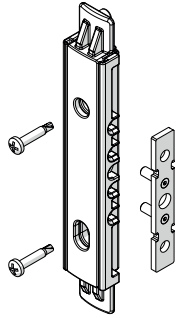


Manovra Prima

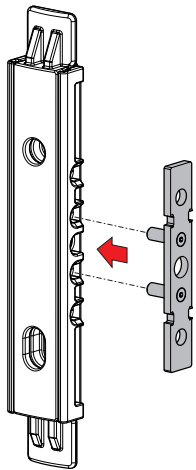


Codice	Descrizione	NODO	Tipologia	Funzionamento	Base Grezzo	Anodizzato Elox	Verniciato	Trend/Oro Ottone	Pezzi per confezione
03954	NP - MOVIMENTAZIONE ANTA	C001-C002-C003-C004-C005-C006-C013-C014-C015-C016-C017	Anta	bidirezionale	X				10

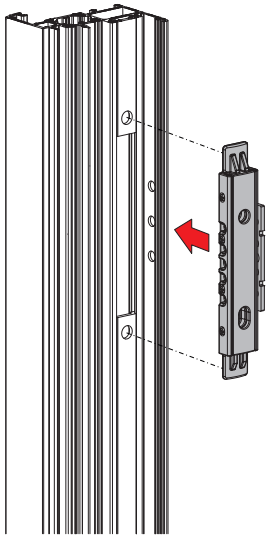
ISTRUZIONI - INSTRUCTIONS - INSTRUCTIONS - INSTRUCCIONES - ANLEITUNG



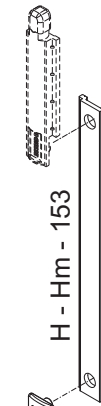
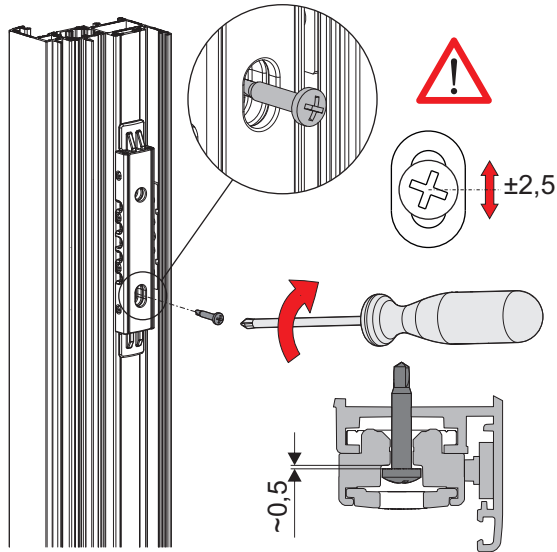
1



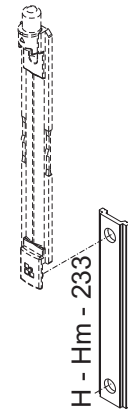
2



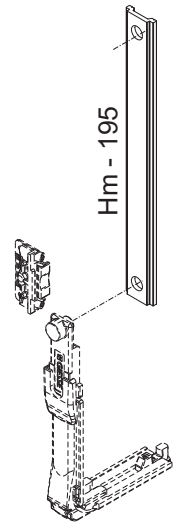
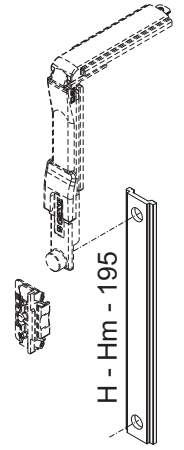
3



$H \geq Hm + 188$
 $Hm > 188$

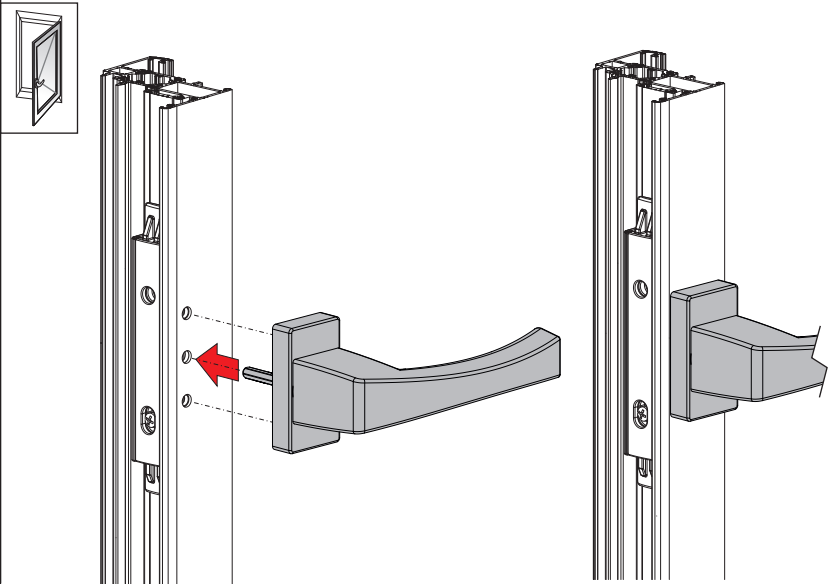


$H \geq Hm + 268$
 $Hm > 268$

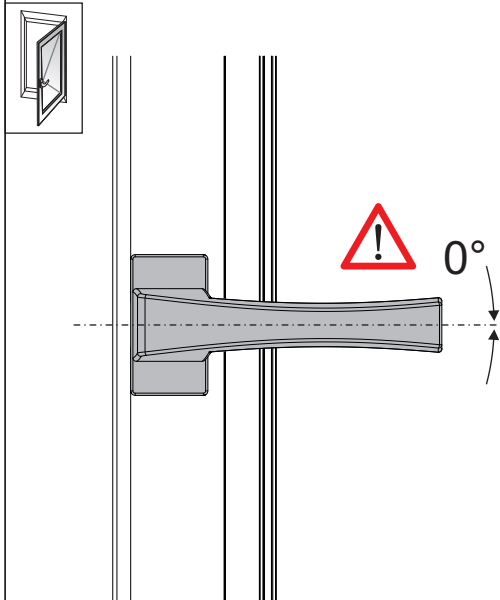


$H \geq Hm + 230$
 $Hm > 230$

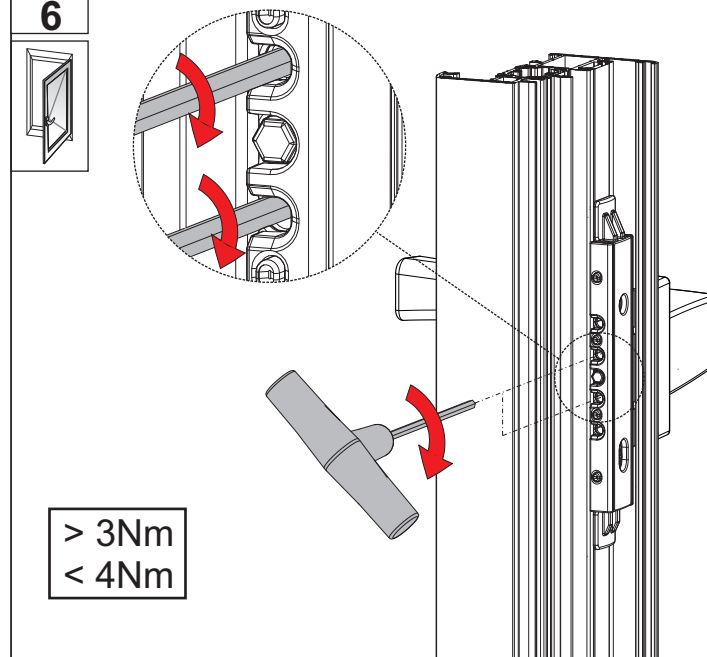
4



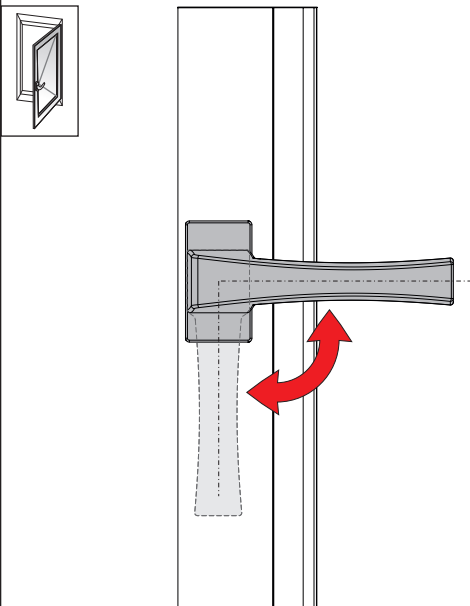
5



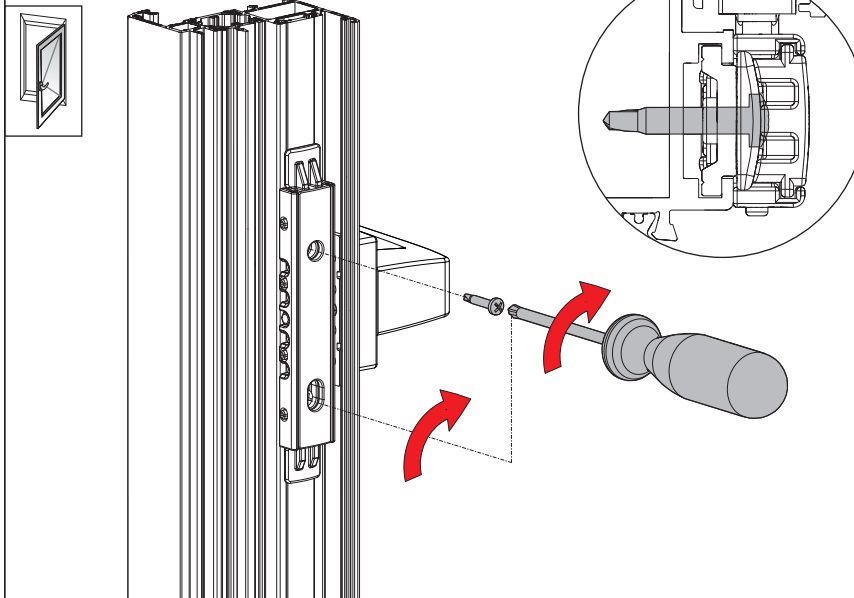
6



7



8



9

