



CARATTERISTICHE

ISTRUZIONI PER IL MONTAGGIO

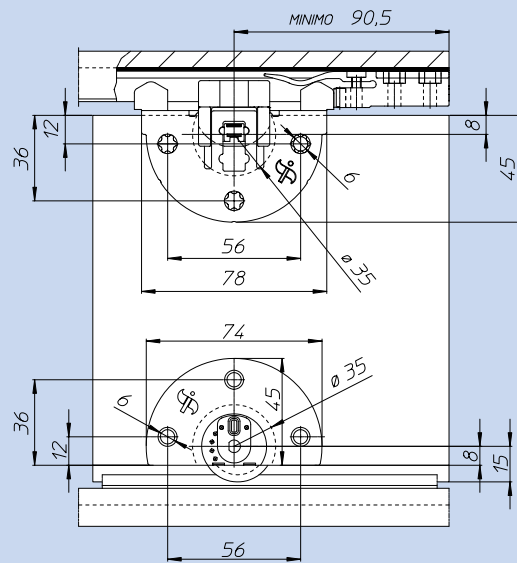
Sistema dall'elevato contenuto qualitativo

1) Cuscinetto rettificato

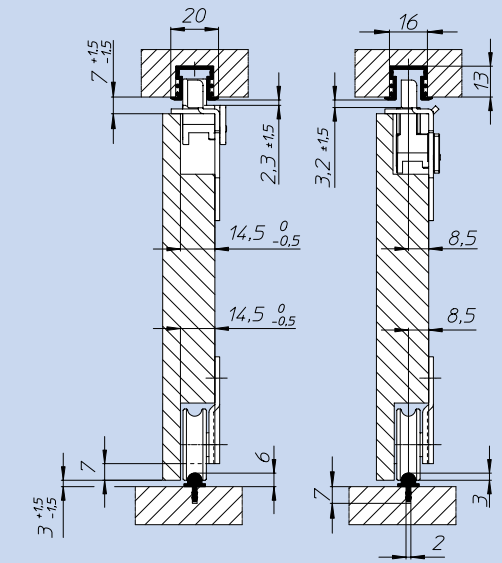
2) Regolazione brevettata

3) Piastra cementata, caratterizzata da una resistenza alla corrosione di oltre 600 ore in nebbia salina

4) Fermo fine corsa con regolazione forza freno



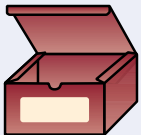
A



B

Kit LUPO

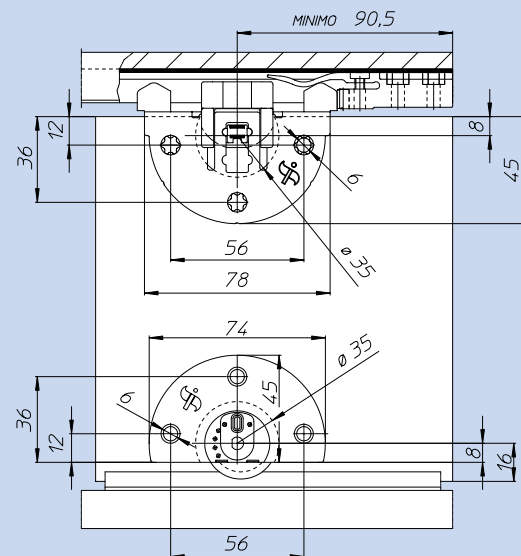
CODICE
1005503



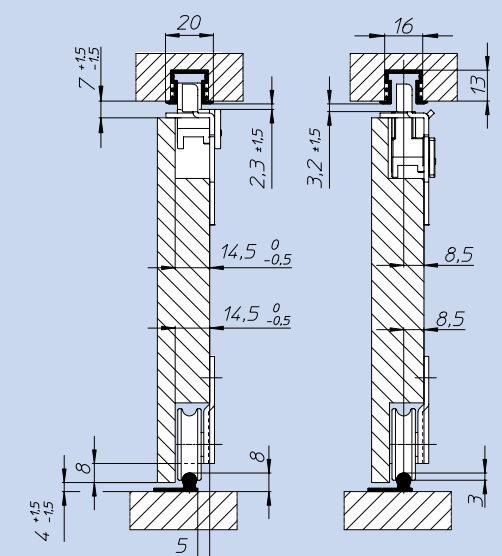
2 carrelli inferiori

2 carrelli superiori

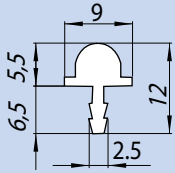
2 fermi fine corsa



C

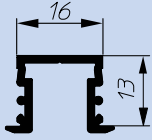


D



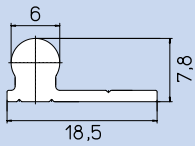
Profilo in alluminio ossidato

ARGENTO	CODICE 1004001A
BRONZO	CODICE 1004001B
NERO	CODICE 1004001N



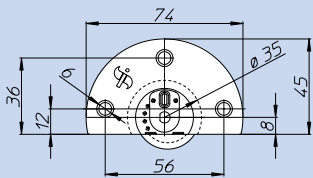
Profilo in alluminio ossidato, fori svasati ogni 20 cm, vite TSP Ø 2,5

ARGENTO	CODICE 1005502A
BRONZO	CODICE 1005502B
NERO	CODICE 1005502N



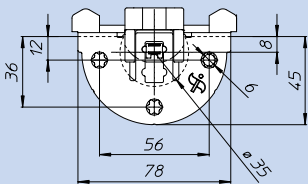
Profilo in alluminio ossidato, fori svasati ogni 30 cm, vite TSP Ø 3

ARGENTO	CODICE 1004502A
BRONZO	CODICE 1004502B
NERO	CODICE 1004502N



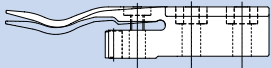
Carrello inferiore con regolazione, cuscinetto rettificato

CODICE 1005504



Carrello superiore con regolazione

CODICE 1005505

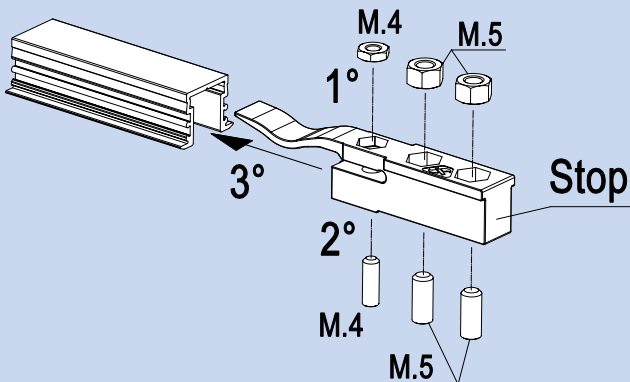


Fermo fine corsa con regolazione forza freno

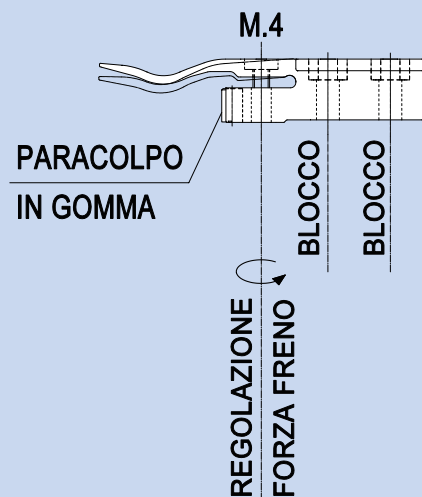
CODICE 1005508



SIMULAZIONE FERMO FINE CORSA CON REGOLAZIONE FORZA FRENO



A



B