

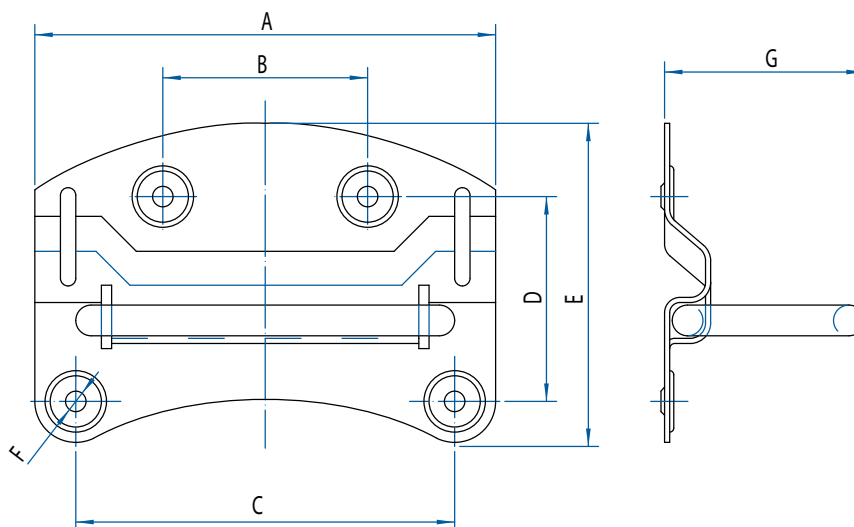


Maniglia per baule / Trunk-handles: mm.90-110

Acciaio ottonato, zincato e brunito / Brass-plated, zinc-plated, burnished steel

Grezzo a richiesta minimo / Unplated steel on request. MOQ: 5000 pz/pcs

Ø tondino / Bar diameter: 6,5



48

Disegno n°	A	B	C	D	E	F	G
7.20.09	90	42	72	40	67	4,2	40
7.20.11	110	57	84	48	84	4,5	55