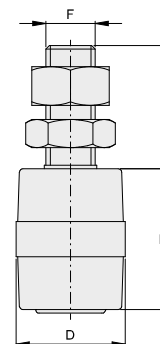




# VA3101

IT Oliva guida superiore  
EN Upper guide roller  
DE Obere Führungsrolle  
FR Olive de guidage supérieure  
ES Rodillo guía superior



CODE	ARTICLE	D	H	L	F	PACK INFO	
<b>ZINCATO / GALVANIZED</b>							
VA3101.A25	113	25	32	30	M14	30	4,0
VA3101.A30	117	30	40	34	M14	30	4,8
VA3101.A40	114	40	44	37	M16	10	2,6
VA3101.B40	118	40	60	41	M16	10	3,1
VA3101.i52	166.0	52	48	67	M20	10	4,9
VA3101.i60	119	60	60	65	M20	4	2,6
* VA3101.A25.O	613	25	32	30	M14	30	6,1
* VA3101.A30.O	617	30	40	34	M14	30	9,2
* VA3101.A40.O	614	40	44	37	M16	10	5,6
* VA3101.B40.O	618	40	60	41	M16	10	7,2
<b>INOX / STAINLESS STEEL</b>							
VA3101.A30.i	1117	30	40	34	M14	10	1,6
VA3101.A40.i	1114	40	44	37	M16	10	2,7
VA3101.B40.i	1118	40	60	41	M16	10	3,1
VA3101.i60.i	1119	60	60	65	M20	4	2,6

Oliva in Nylon bianco / Roller in white Nylon / Weiss Führungsrolle /  
Olive en Nylon blanc / Oliva de Nylon blanco

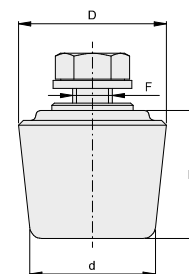
\* : Oliva in ottone / Brass Roller / Messing Führungsrolle / Olive en  
laton / Rodillo de latón



TECH. INFO

# VA3102

IT Oliva conica  
EN Tapered roller  
DE Kegelrolle  
FR Olive conique  
ES Rodillo cónico



CODE	ARTICLE	D	d	H	F	PACK INFO	
<b>ZINCATO / GALVANIZED</b>							
VA3102.T30	110	30	24	26	M8	30	1,9
VA3102.T37	111	37	30	30	M10	30	3,2

NOTE :

**Cod. T30:** Oliva conica piccola in nylon nero, adatta per profilo UPN 40x35 /  
Small nylon tapered roller black, adapted to fit into profile UPN 40x35 / Kleine  
Nylon Kegelrolle passend mit das Profil UPN 40x35 / Olive petite conique pour  
profil UPN 40 X 35 / Rodillo cónico pequeña de nylon negro, apta para perfil  
UPN 40x35

**Cod. T37:** Oliva conica grande in nylon nero, adatta per profilo UPN 50x37 / Big  
nylon tapered roller black, adapted to fit into profile UPN 50x37 / Kleine Nylon  
Führungsrolle passend mit das Profil UPN 50x37 / Olive grande conique pour  
profil UPN 50 X 37 / Rodillo cónico grande de nylon negro, apta para perfil UPN  
50x37



TECH. INFO