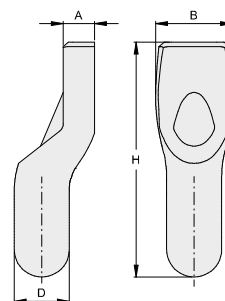




PERNI PER CARDINI PIN HINGES

VC2101

IT Perno per cardini inferiori
EN Pivot pin for bottom hinges
DE Unter Drehstift
FR Pivot pour gond inférieur
ES Pernio inferior



CODE	ARTICLE	D	A	B	H	PACK INFO	
ZINCATO / GALVANIZED							
VC2101.020	120/Z	20	10	30	89	20	4,0
VC2101.023	121/Z	23	12	32	98	12	3,5
VC2101.028	124/Z	28	15	38	105	6	2,7
INOX / STAINLESS STEEL							
VC2101.020.i	1120	20	10	30	89	10	2,0
VC2101.023.i	1121	23	12	32	98	10	2,9
NATURAL / RAW							
VC2101.020.L	120	20	10	30	89	20	4,0
VC2101.023.L	121	23	12	32	98	12	3,5
VC2101.028.L	124	28	15	38	105	6	2,8

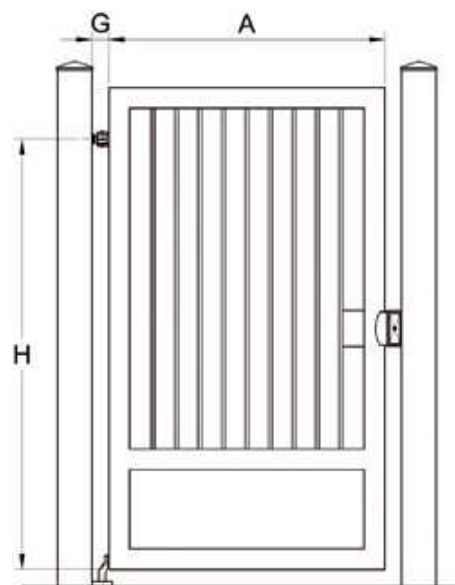


TECH. INFO



con cardini da / with hinges
mit Tordrehpunkten / avec
gonds / con bisagra

M18: G = 50 mm
M22: G = 55 mm
M27: G = 65 mm



COD. **VC2101.020.L / VC2101.020 / VC2201.020.L / VC2201.020**
COD. **VC2101.023.L / VC2101.023 / VC2201.023.L / VC2201.023**
COD. **VC2101.028.L / VC2101.028 / VC2201.028.L / VC2201.028**

da abbinare ai cardini / to be combined with hinges /
mit den Tordrehpunkten zu kombinieren /
à associer aux gonds / para combinar con las bisagras

M18
M22
M27