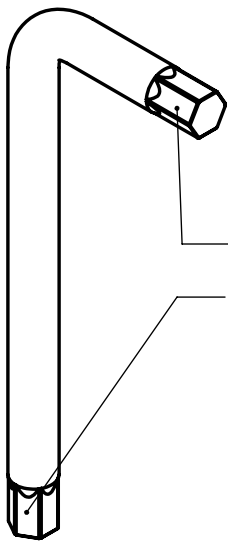
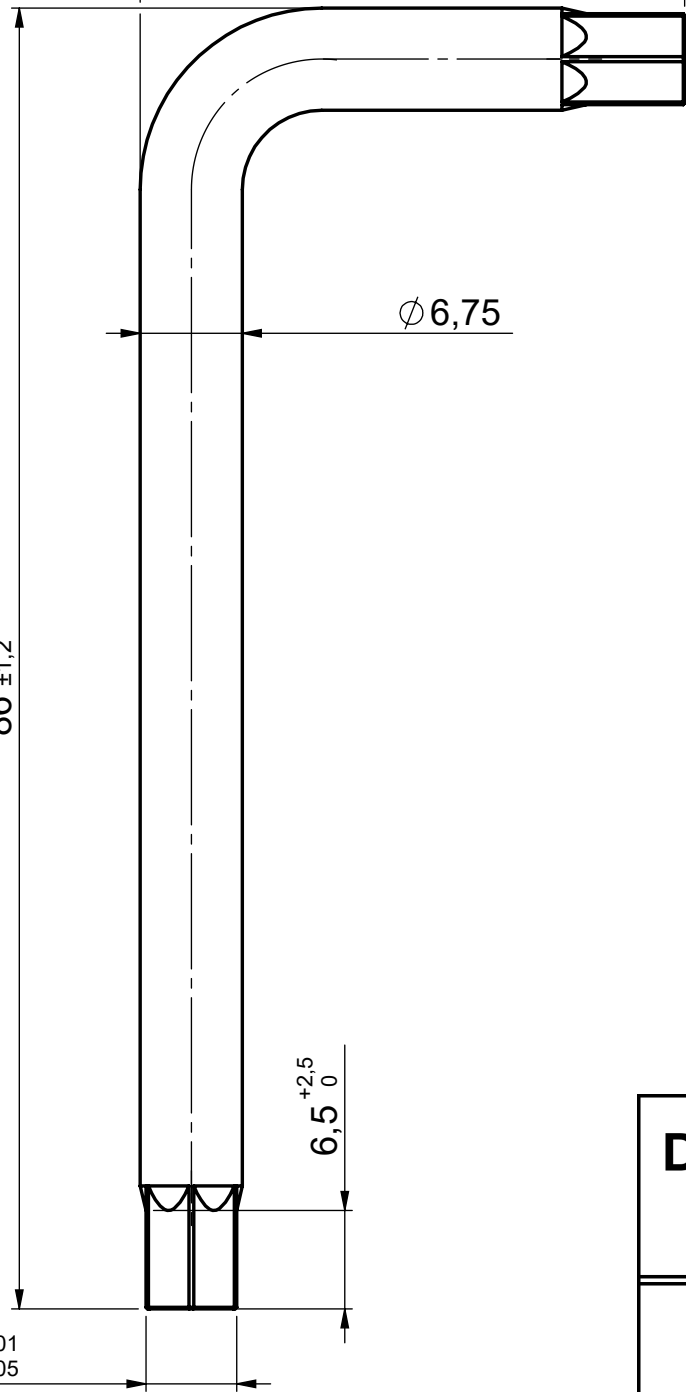
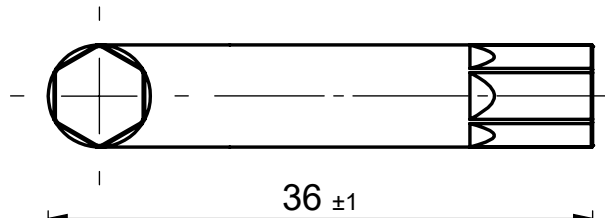


General Tolerances EN 22768-1 (ISO 2768-1)

Class	0,5 - 3mm	> 3 - 6mm	> 6 - 30mm	> 30 - 120mm	> 120 - 400mm
m	±0,1	±0,1	±0,2	±0,3	±0,5
c	±0,2	±0,3	±0,5	±0,8	±1,2

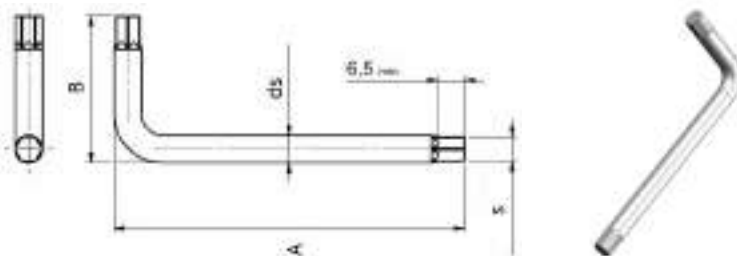


HRC & X RAY
Measuring point

Es.6 $\begin{matrix} -0,01 \\ -0,05 \end{matrix}$

**Durezza
(HRC)**

52	+5 -10
----	-----------



article

a

b

ds

s

566F336086

86

36

6,75

6