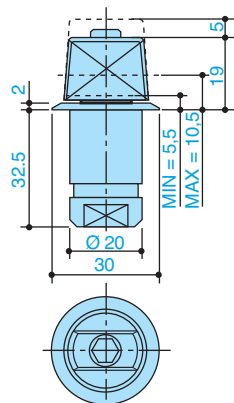


Codice / Code

AC 299

Piletta a murare perno rettangolare tedesco.
Floor idle pivot.
Rectangular German spindle.

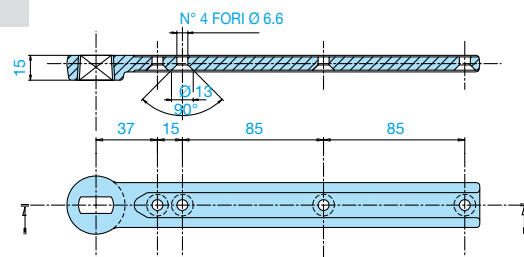


max. 120

Codice / Code

AC 298

Braccio inferiore in acciaio per porte a ventola.
Cava rettangolare tedesca.
Bottom arm in steel for double action doors.
Rectangular German spindle.

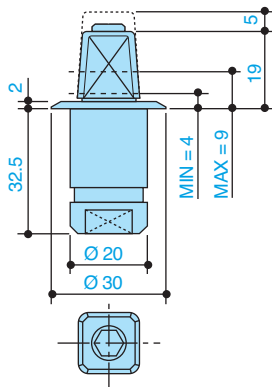


max. 300

Codice / Code

AC 246

Piletta a murare perno quadro italiano.
Floor idle pivot.
Square Italian spindle.

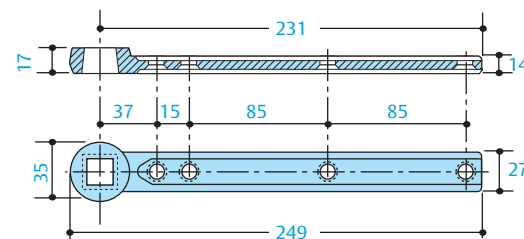


max. 120

Codice / Code

AC 297

Braccio inferiore in acciaio per porte a ventola.
Cava quadro italiano.
Bottom arm in steel for double action doors.
Square Italian spindle.

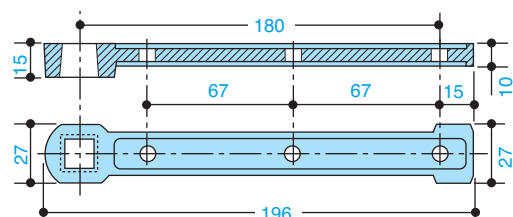


max. 300

Codice / Code

AC 213

Braccio inferiore in acciaio. Cava quadro italiano.
Bottom arm in steel for double action doors.
Square Italian spindle.

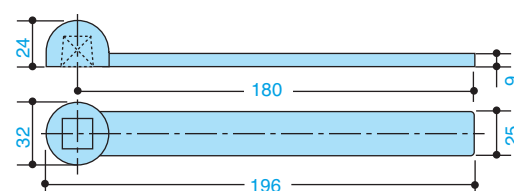


max. 170

Codice / Code

AC 2

Braccio inferiore in ottone per porte a ventola.
Cava quadro italiano.
Bottom arm in brass for double action doors.
Square Italian spindle.

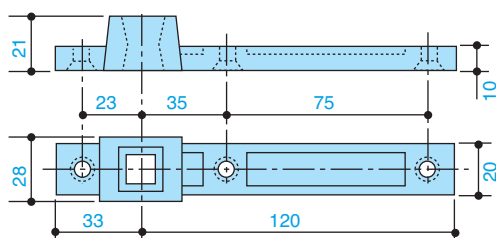


max. 100

Codice / Code

AC 115

Braccio inferiore reversibile in acciaio per porte a ventola. Cava quadro italiano.
Reversible bottom arm in steel for double action doors.
Square Italian spindle

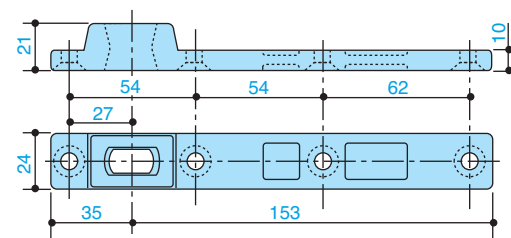


max. 300

Codice / Code

AC 393

Braccio inferiore reversibile in acciaio per porte a ventola. Cava rettangolare tedesca.
Reversible bottom arm in steel for double action doors.
Rectangular German spindle.

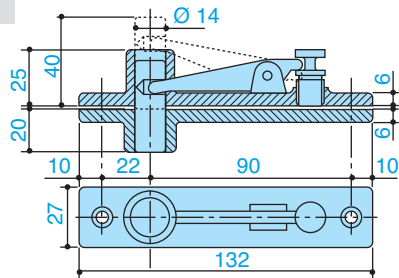


max. 300

Codice / Code

Perno superiore per porte a ventola.
Double acting top pivot.

AC 8

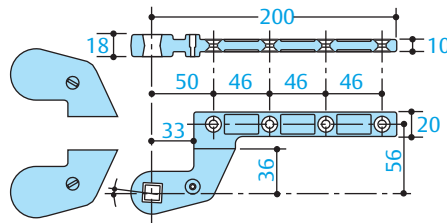


max. 300

Codice / Code

Braccio inferiore destro e sinistro in acciaio per porte a battente, interasse mm. 36. Cava quadro italiano. Right and left bottom arm in steel for single acting doors, 36 mm. offset. Square Italian spindle.

AC 583

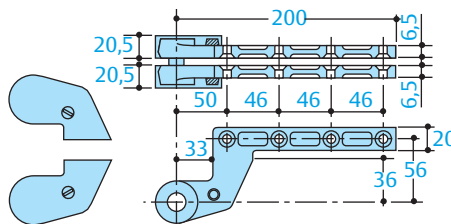


max. 300

Codice / Code

Perno superiore in acciaio per porte a battente sinistre o destre, interasse mm. 36. Top pivot in steel for left or right doors 36 mm. offset.

AC 384

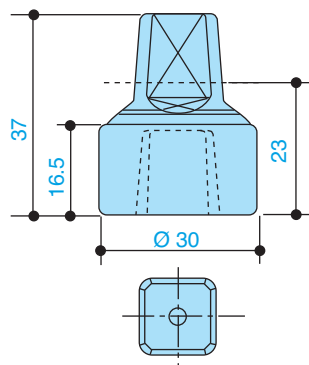


max. 300

Codice / Code

AC 261

Prolunga + 23 mm. in acciaio per quadro italiano. Extension +23 mm. in steel for square Italian spindle.

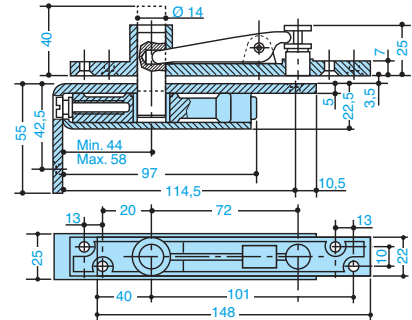


max. 300

Codice / Code

Perno superiore per porte a ventola. Punto di rotazione registrabile. Double acting top pivot. Adjustable pivot point.

AC 118

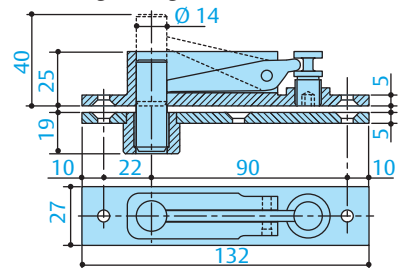


max. 170

Codice / Code

Perno superiore in acciaio massiccio per porte a ventola, con boccola autolubrificante. Double acting top pivot in full steel with self lubricating bushing.

AC 375

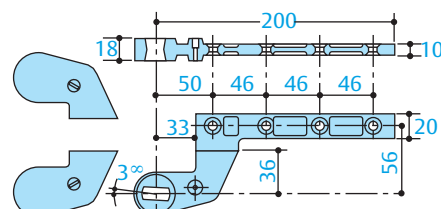


max. 300

Codice / Code

Braccio inferiore destro e sinistro in acciaio per porte a battente, interasse mm. 36. Cava rettangolare tedesca. Right and left bottom arm in steel for single acting doors, 36 mm. offset. Rectangular German socket.

AC 392

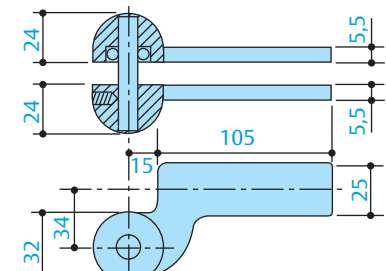


max. 300

Codice / Code

AC 7

Perno superiore in ottone naturale con cuscinetto a sfere per porte destre o sinistre. Single acting top pivot in natural brass with ball bearing for right or left doors.

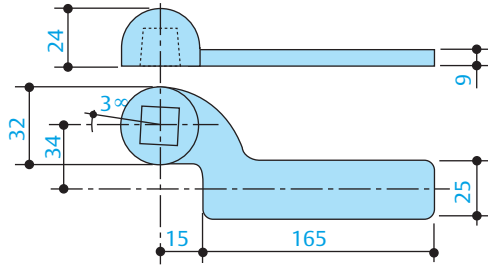


max. 100

Codice / Code

Braccio inferiore sinistro in ottone naturale per porte a battente. Cava quadro italiano.
Left bottom arm in natural brass for single acting doors. Square Italian spindle.

AC 3

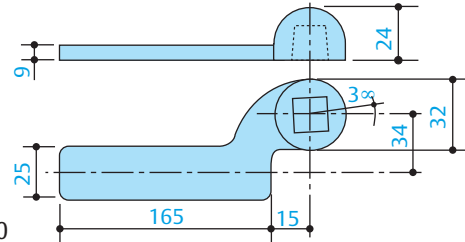


max. 100

Codice / Code

Braccio inferiore destro in ottone naturale per porte a battente. Cava quadro italiano.
Right bottom arm in natural brass for single acting doors. Square Italian spindle.

AC 1

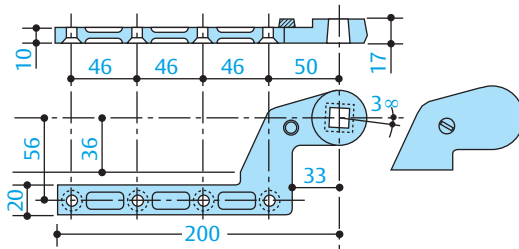


max. 100

Codice / Code

Braccio inferiore destro in acciaio per porte a battente, interasse mm. 36. Cava quadro francese.
Right bottom arm in steel for single acting doors, 36 mm. offset. Square French spindle.

AC 373

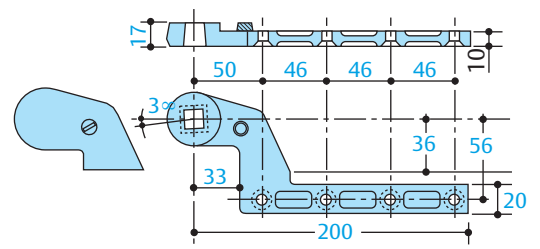


max. 300

Codice / Code

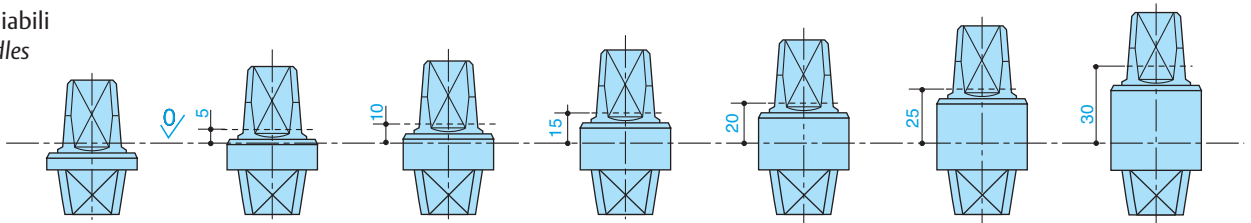
Braccio inferiore sinistro in acciaio per porte a battente, interasse mm. 36. Cava quadro francese.
Left bottom arm in steel for single acting doors, 36 mm. offset. Square French spindle.

AC 374



max. 300

Perni intercambiabili Detachable spindles



Codice / Code	Codice / Code	Codice / Code	Codice / Code	Codice / Code	Codice / Code	Codice / Code
AC 340	AC 341	AC 342	AC 343	AC 344	AC 345	AC 346
AC 350	AC 351	AC 352	AC 353	AC 354	AC 355	AC 356
AC 360	AC 361	AC 362	AC 363	AC 364	AC 365	AC 366