

Battente alto con piastrina a fissare

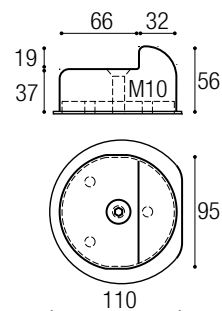
Upper stop with plate to be fixed
Battant d'arrêt haute avec plaque à visser
Oberanschlag mit Plättchen zur Fixierung



Cod. 287P



Cod. 287F



Codice	
287P	4
287F	4

Battenti a cementare

Stop to be cemented
Butée à cimenter
Anschlag zum Aufkohlen



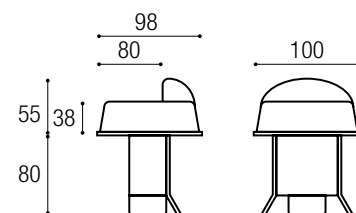
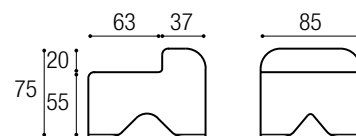
Cod. 287B



Cod. 288

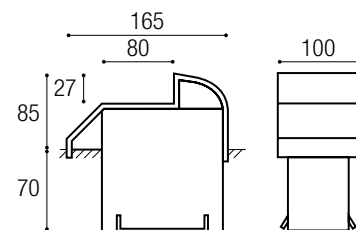


Zanca antisfondamento
Anti shock bracket
Patte chambre
Anti-Durchbruch Befestigung



Cod. 289

Per portoni pesanti
For heavy gates
Pour portes lourdes
Für schwere Toren



Cod.	
287B	6
288	12
289	2