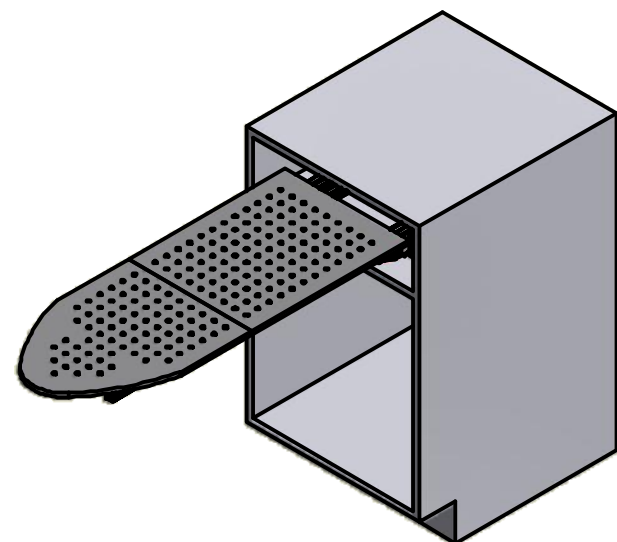


PRUA SHORT

ISTRUZIONI DI MONTAGGIO ASSEMBLY INSTRUCTIONS

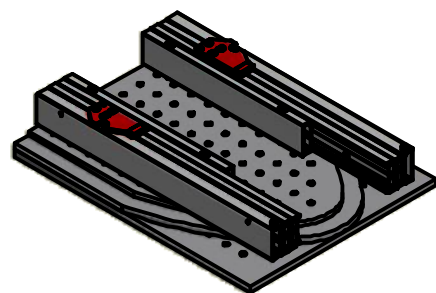
MODELLO
MODEL:

411/78.1181.22



CONTENUTO DELLA CONFEZIONE INCLUDED IN THE PACKAGING

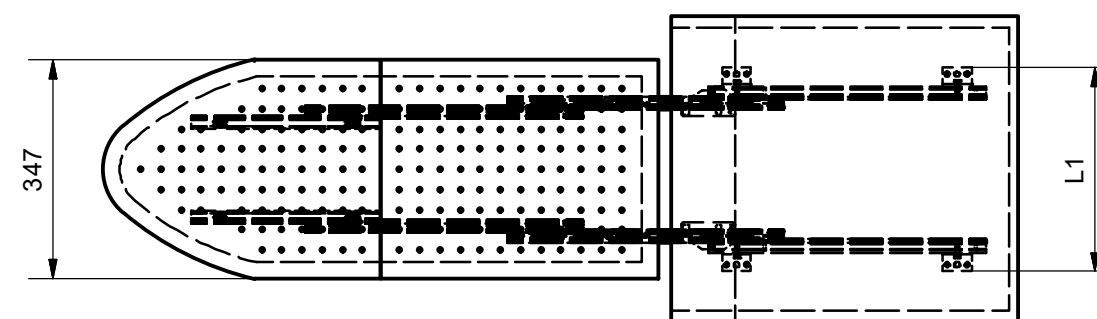
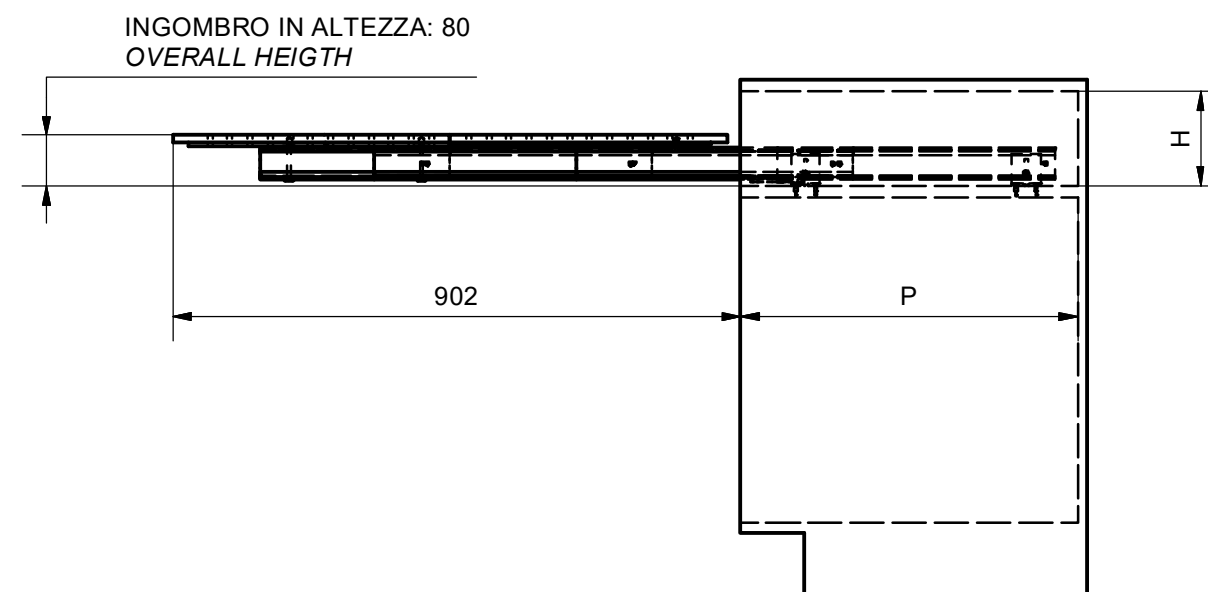
GUIDE + ASSE DA STIRO
SLIDES - IRONING BOARD



SACCHETTO ACCESSORI - ACCESSORIES

- A. Chiave esa. da 5 - n° 5 Allen key (x 1)
- B. Vite TCCE M6x12 - M6x12 SHCS screw (x 4)
- C. Perno - Pin (x2)
- D. Staffa di fissaggio - Fixing bracket (x4)
- E. Vite truciolare 3.0x20 - 3.0x20 Chipboard Screw (x 8)

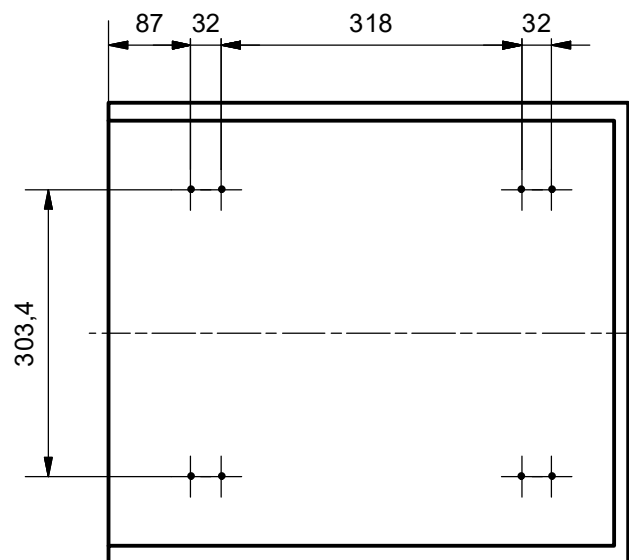
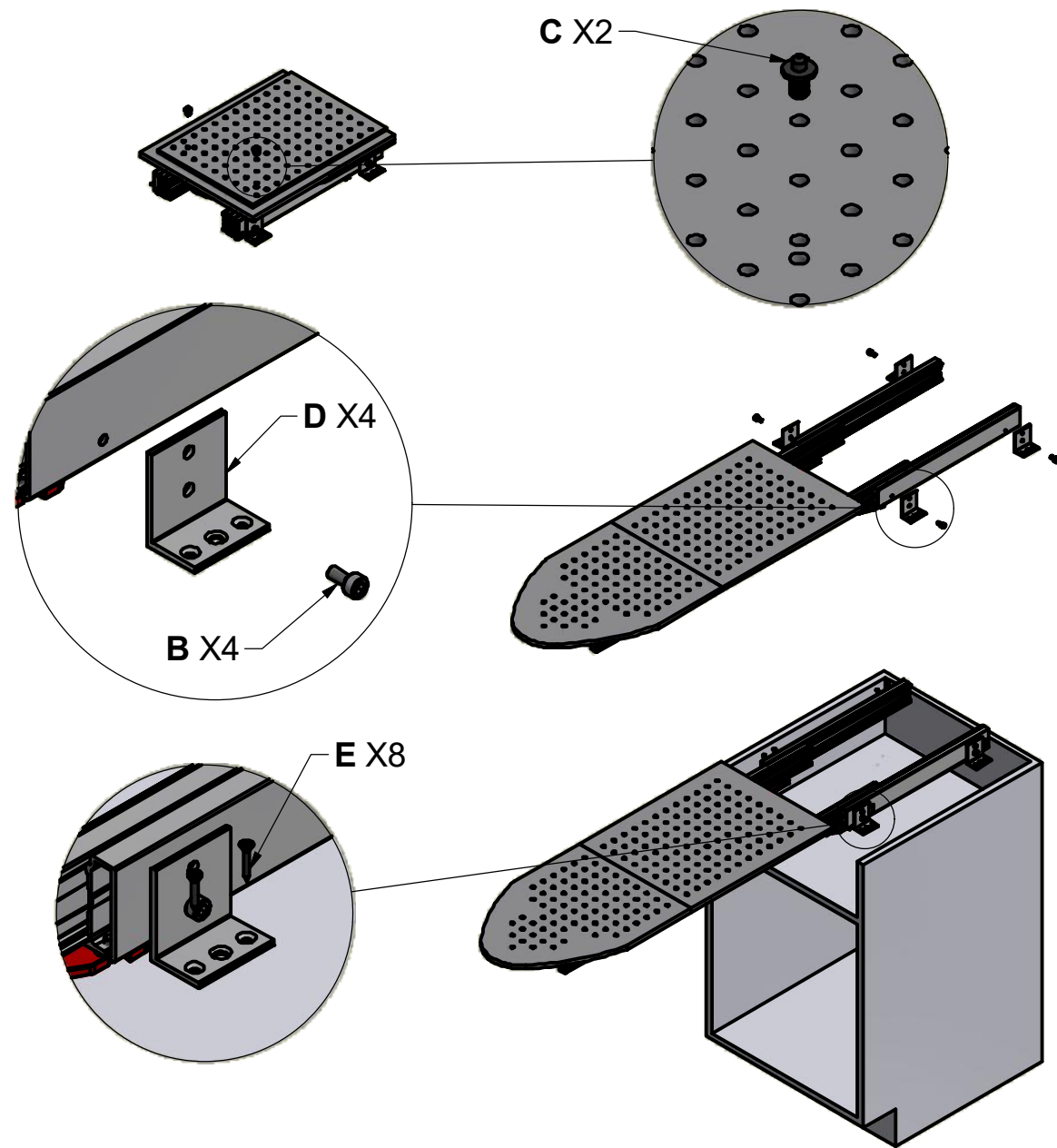
DIMENSIONI GENERALI MOBILE GENERAL CABINET DIMENSIONS



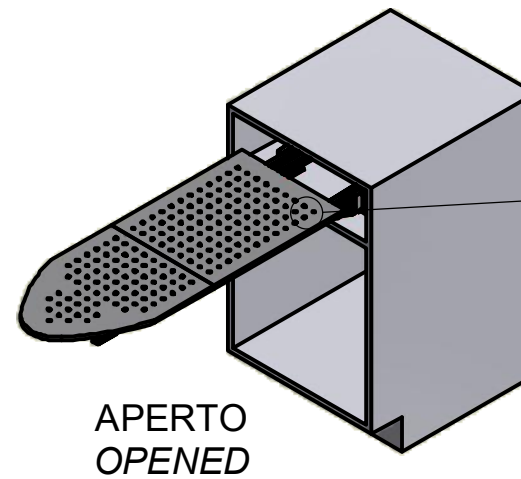
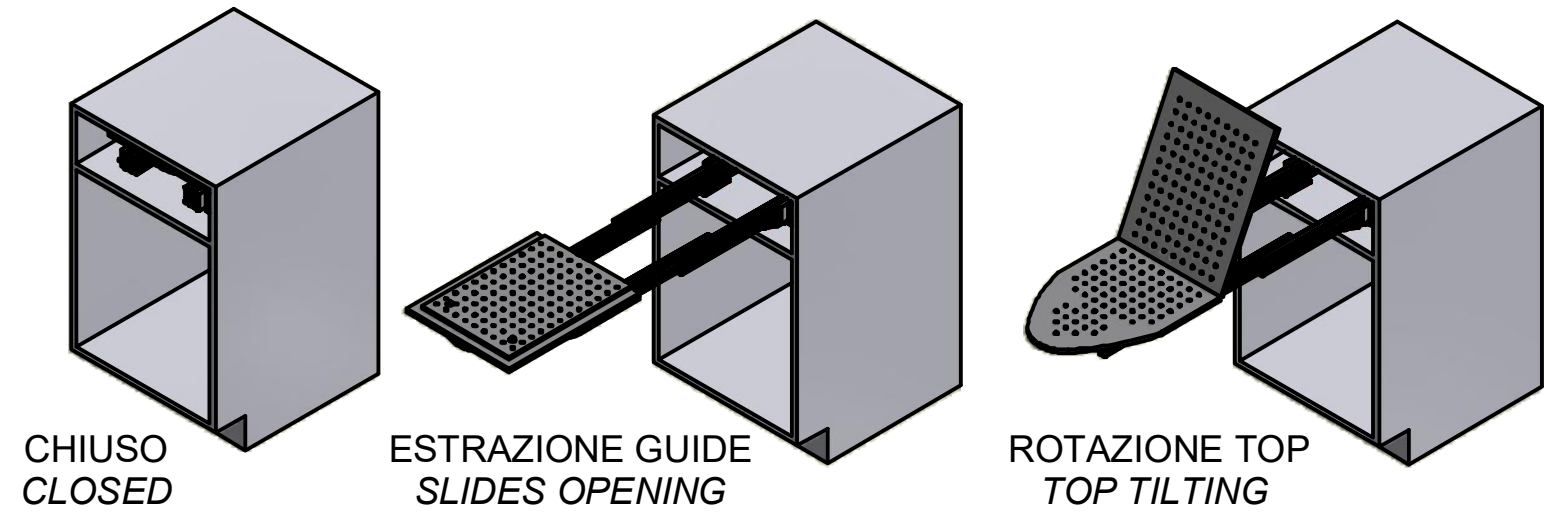
DIMENSIONE - DIMENSION	SIMBOLO - SYMBOL	mm
ALTEZZA - HEIGHT	H	MIN: 140
PROFONDITA' - DEPTH	P	MIN: 450
LARGHEZZA - WIDTH	L1	MIN: 330

MONTAGGIO DEL MECCANISMO MOUNTING OF THE MECHANISM

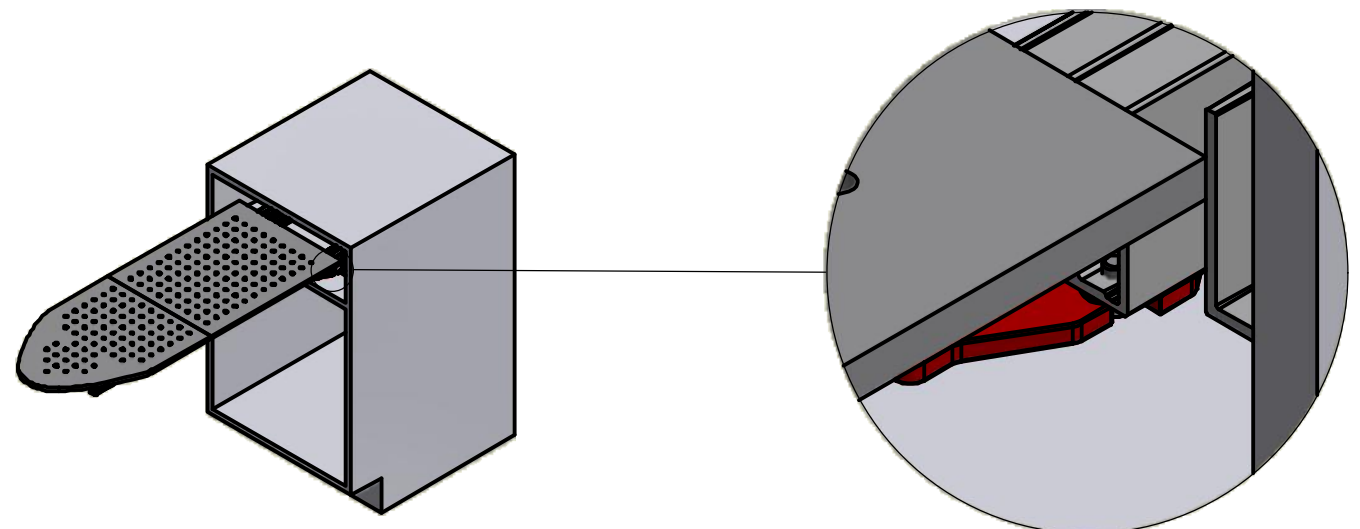
SEQUENZA DI FUNZIONAMENTO FUNCTIONING STEPS



POSIZIONI FORI FISSAGGIO
MECCANISMO (x8 Ø2∇10)
HOLES FOR MECHANISM
POSITION (x8 Ø2∇10)



BLOCCARE IL PIANO. SPINGERE VERSO L'INTERNO, IL PERNO DI BLOCCO DEVE ENTRARE NEL FORO.
LOCK THE TOP. PUSH INWARD, THE LOCKING PIN MUST ENTER THE HOLE.



PER CHIUDERE IL MECCANISMO SPINGERE LE DUE LEVE ROSSE VERSO L'INTERNO.
TO CLOSE THE MECHANISM PUSH THE TWO RED LEVERS INWARDS.