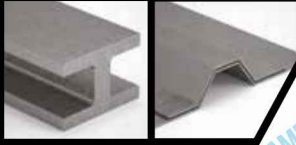


# 81190

## TSP PH



ALWAYS UP-TO-DATE WITH REGULATIONS



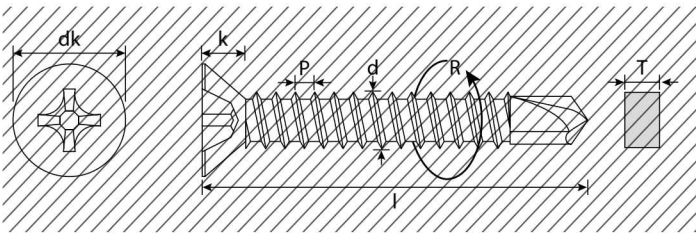
MORE INFO ON PAGE 14

DIN 7504-P (o) • Uni 8119 • Iso 15482



### SELF-DRILLING SCREWS PH FLAT HEAD

- Viti autopercoranti testa svasata piana PH
- Bohrschrauben Senkkopf PH-Antrieb
- Vis autoperceuses tête fraisée PH
- Tornillos autotaladrantes cabeza plana PH
- Винты самонарезающие самосверлящие плоская потайная головка PH



Diameters Diametri	Limits Limiti	dk	k	d	P	PH	R g/min-rpm	T
2,9	Min.	5,20	~ 1,70	2,76	~ 1,10	1	2.250	1,00
	Max	5,50		2,90				
3,5	Min.	6,44	~ 2,10	3,35	~ 1,30	2	2.250	≤16 1,50
	Max	6,80		3,53				≥19 2,00
3,9	Min.	7,14	~ 2,30	3,73	~ 1,30	2	2.250	≤16 1,50
	Max	7,50		3,91				≥19 2,00
4,2	Min.	7,74	~ 2,50	4,04	~ 1,40	2	2.250	≤16 2,00
	Max	8,10		4,22				≥19 3,00
4,8	Min.	9,14	~ 3,00	4,62	~ 1,60	2	2.250	≤16 3,00
	Max	9,50		4,80				≥19 4,00
5,5	Min.	10,37	~ 3,40	5,28	~ 1,80	3	2.250	4,00
	Max	10,80		5,46				
6,3*	Min.	11,97	~ 3,80	6,03	~ 1,80	3	2.250	6,00
	Max	12,40		6,25				

\* Diameter 6,3 with cutting thread

\* Diametro 6,3 con filetto automaschiante

**R** The recommended screwdriver speed is purely indicative. The value proposed is based on tests carried out in our laboratories in conformity with regulatory norms. The use of different materials on site may therefore determine values other than those recommended.

La velocità avvitatore consigliata è puramente indicativa. Il valore proposto è il risultato di test nei nostri laboratori in accordo alla Normativa di riferimento. L'utilizzo in cantiere di materiali diversi può quindi determinare valori differenti da quelli consigliati.

**T** Drilling capacity.  
Capacità di foratura.

## C1022

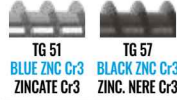
- **Carbon steel: C1022**  
Acciaio temperato: C1022
- **Case hardness: HV 560 Min**  
Durezza superficiale: HV 560 Min
- **Core hardness: HV 270-425**  
Durezza a cuore: HV 270-425
- **Threaded section: as per listing**  
(Ex 4,8x70/60 = thread 60)  
Parte filettata: come da listino  
(Es. 4,8x70/60 = filetto 60)

# 81190

## TSP PH



## FINISHING



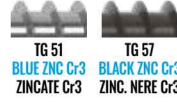
**SIZES**  
**MISURE**

TG 51 BLUE ZINC Cr3  
ZINCATE Cr3

TG 57 BLACK ZINC Cr3  
ZINC. NERE Cr3

2,9 x 13
16
19
22
3,5 x 9,5
13
16
19
22
25
32
38
45
50
3,9 x 13
16
19
22
25
32
38
45
50
4,2 x 13
16
19
22
25
32
38
45
50

## FINISHING



**SIZES**  
**MISURE**

TG 51 BLUE ZINC Cr3  
ZINCATE Cr3

TG 57 BLACK ZINC Cr3  
ZINC. NERE Cr3

4,8 x 16
19
22
25
32
38
45
50
60
70/60
80/60
90/70
100/70
5,5 x 19
22
25
32
38
45
50
60
6,3 x 25
32
38
45
50
60

BLIND RIVETS

STAINLESS STEEL  
SCREWSHEX LAG  
SCREWSDRYWALL  
SCREWSCARPENTRY WOOD  
SCREWSCHIPBOARD  
SCREWSDOME & EURO  
SCREWSMACHINE  
SCREWSTRILOBULAR SCREWS  
NUTS BOLTS WASHERS  
THREADED RODSSELF-TAPPING  
SCREWSCONCRETE  
SCREWSBLOCKFRAME  
SCREWSSELF-DRILLING  
SCREWS

BITS