

## Cardini inferiori regolabili a fissare

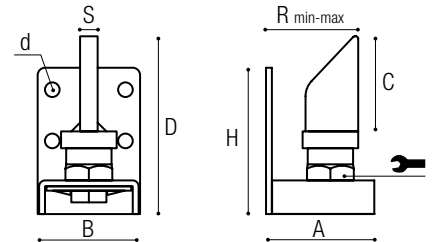
Adjustable lower hinges to be fixed  
Gonds inférieurs réglables à visser  
Regelbare untere Torbänder zum Befestigen



Cod. 623



Cod. 621

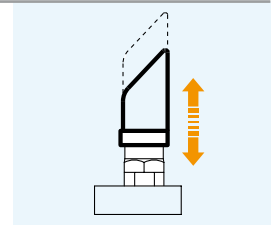


Cod.	A	B	C	D	d	H	S	R min-max	🔧	📦
621	74	70	65	120	9	100	12	55-70	30	6
621L	94	70	65	120	9	100	12	55-90	30	6
623	88	88	75	155	12,5	120	15	70-85	36	4



## Cardini inferiori con doppia regolazione a saldare

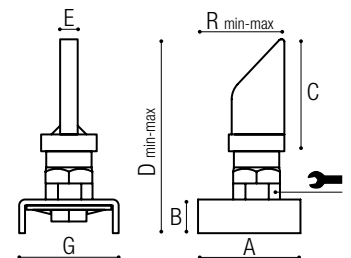
Double adjustment lower hinges to be welded  
Gonds inférieurs avec double réglage à souder  
Untere Torbänder mit doppelter Einstellung zum Schweißen



Cod. 323



Cod. 321

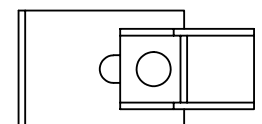
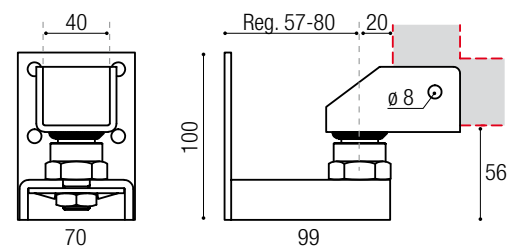


Cod.	A	B	C	D min-max	E	R min-max	G	🔧	📦
321	70	22	65	130-138	12	50-65	68	30	12
323	85	32	75	168-180	15	65-80	88	36	4



## Cardine inferiore regolabile per fissaggio dell'anta

Adjustable lower hinge for fixing the swing  
Gonds inférieurs réglables pour la fixation du porte  
Regelbare untere Torbänder zur Flügelbefestigung



Cod.	📦
621F40	4