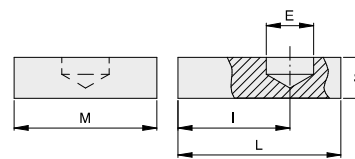
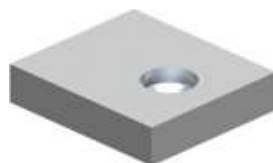




VC2211

IT Piastra inferiore per cardine inferiore
EN Bottom plate for bottom pivot pin
DE Unten Platte für unten Torband
FR Socle inférieur pour pivot inférieur
ES Placa inferior para pernio inferior



CODE	ARTICLE	E	I	L	S	M	PACK INFO
NATURAL / RAW							
VC2211.020.L	255.30S	20	51	75	15	60	10 4,9
VC2211.023.L	255.35S	23	55	80	20	70	6 5,0
VC2211.028.L	255.40S	28	65	90	20	80	4 4,3

COD. VC2211.020.L
COD. VC2211.023.L
COD. VC2211.028.L

da abbinare ai cardini a fascia / to be combined with wrap-around hinges / mit den Schmiedeserne Torbänder zu kombinieren / à associer aux gonds à collier / para combinar con las bisagras abrazaderas

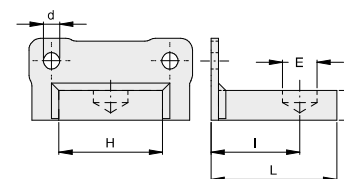
M18
M22
M27



TECH. INFO

VC2212

IT Piastra a 2 fori per perno inferiore
EN Bottom 2 holes plate for bottom pin pivot
DE 2 Löchern Platte für unten Drehstift
FR Socle 2 trous pour pivot inférieur
ES Placa de 2 agujeros para pernio inferior



CODE	ARTICLE	L	S	I	E	H	D	PACK INFO
ZINCATO / GALVANIZED								
VC2212.020	255.30P	79	15	55	20	60	9	10 6,8
VC2212.023	255.35P	85	20	60	23	70	11	6 6,4
VC2212.028	255.40P	95	20	70	28	80	13	4 5,6

COD. VC2212.020
COD. VC2212.023
COD. VC2212.028

da abbinare ai cardini a fascia / to be combined with wrap-around hinges / mit den Schmiedeserne Torbänder zu kombinieren / à associer aux gonds à collier / para combinar con las bisagras abrazaderas

M18
M22
M27



TECH. INFO