

24T



Modello / Model
Asta esterna tonda
External round rod

Varianti / Variants

Ferro / Iron

- ø 9 x 1200 mm
- ø 9 x 1600 mm
- ø 9 x 2000 mm
- ø 9 x 2400 mm
- ø 9 x 2600 mm

Ottone / Brass

- ø 9 x 1250 mm
- ø 9 x 1650 mm
- ø 9 x 2100 mm
- ø 9 x 2500 mm



Modello / Model
Asta esterna tonda pre-tagliata
Cutted external round rod

Varianti / Variants

Ferro / Iron

- ø 8 x (435+750) mm
- ø 8 x (435+1250) mm
- ø 8 x (1030+1250) mm
- ø 8 x (1030+1500) mm

Altezza massima finestra /
Maximum window height

- 1295 mm
- 1795 mm
- 2395 mm
- 2655 mm



Modello / Model
Passante per asta esterna tonda
Through element for external round rod



Modello / Model
Incontro a vite
Lock with screw



Scegliere il passante d8 o d9 a seconda del diametro dell'asta desiderata
Choose d8 or d9 through element, according to chosen rod diameter

Varianti / Variants

- asta/rod ø 8
- asta/rod ø 9

25T



Modello / Model
Asta esterna 1/2 tonda
External half round rod

Varianti / Variants

Ferro / Iron

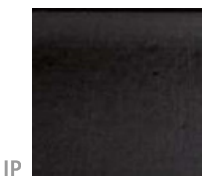
- 1200 mm
- 1600 mm



Modello / Model
Passante per asta esterna 1/2 tonda
Through element for external half round rod



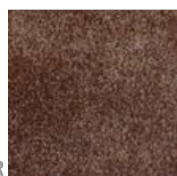
Modello / Model
Incontro a vite per asta esterna 1/2 tonda
Lock with screw for external half round rod



IP ferro con verniciatura poliestere nero
Iron with black powder coating



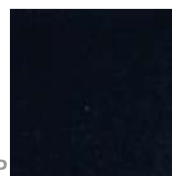
IT ferro tropicalizzato
Yellow zinc iron



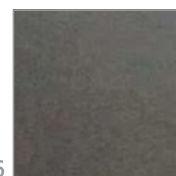
IR ferro con finitura ruggine
Iron with rust finish



BB ottone brunito
Burnished brass



XP inox AISI304 verniciato RAL9005
black painted stainless steel AISI 304



X6 inox AISI304 verniciato trasparente
transparent painted stainless steel AISI 304



X8 inox AISI304 satinato e verniciato
painted stainless steel AISI 304